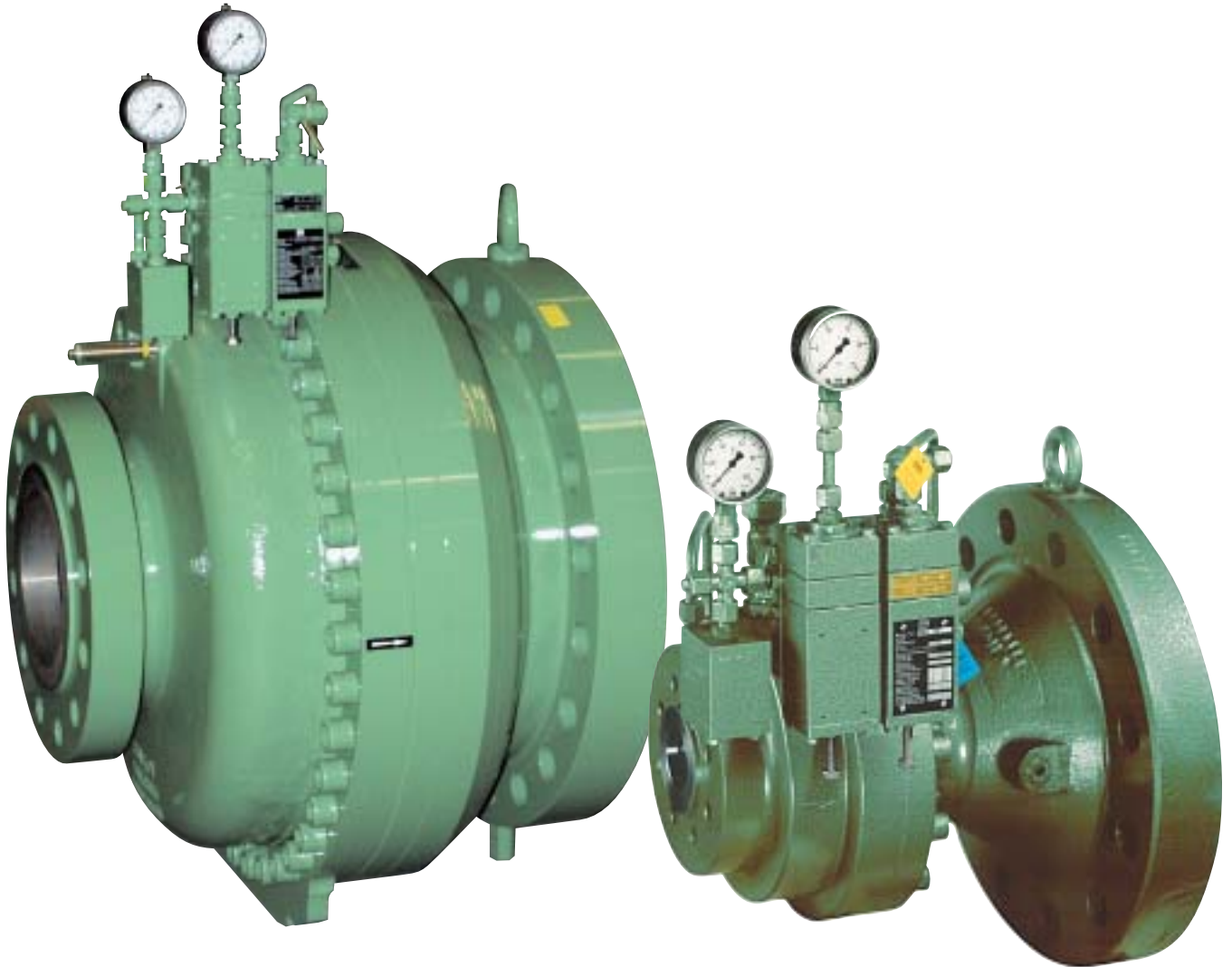


Gas Pressure Regulator RMG 512

RMG 512 b DN 25 to DN 100
RMG 512 c DN 150 and DN 200



**Operation and Maintenance,
Spare Parts**

512.20
edition 09/2003

Serving the Gas Industry - WORLDWIDE



Contents

page

1.	General remarks	3
2.	Safety symbols	3
3.	Special maintenance instructions	4
3.1	instructions for RMG 512b and RMG 512c	4
3.2	instructions only for RMG 512b	4
3.3	instructions only for RMG 512c	4
3.4	torque tables	5
3.5	lubricants	5
3.6	tools	5
4.	Spare parts	
4.1	spare parts RMG 512b	
4.1.1	spare parts drawings	6
4.1.2	spare parts list	7, 8, 9
4.1.3	parts needed for maintenance work	10
4.2	spare parts RMG 512c	
4.2.1	spare parts drawings	11, 12
4.2.2	spare parts list	13, 14, 15
4.2.3	parts needed for maintenance work	16
4.3	spare parts for accessories	
4.3.1	spare parts drawings	17
4.3.2	spare parts list	18
4.3.3	parts needed for maintenance work	18

1. General Remarks

Our leaflet 512.00 gives full information with technical data, different versions and dimensions of the gas pressure regulator RMG 512, including a description of design and function.

The integrated functional components are described in corresponding individual leaflets:

Pilot	RMG 650	General Description	650.00
		Betriebs- und Wartungsanleitung / Ersatzteile	650.20
Filter	RMG 905	General Description	905.00
		Betriebs- und Wartungsanleitung / Ersatzteile	905.20
Stroke indicator	RMG 970	General Description	970.00
		Betriebs- und Wartungsanleitung / Ersatzteile	970.20

Our brochure "General Operating Instructions for Gas Pressure Regulators and Safety Devices" will be useful for fitting the valve into the line, putting into operation and finding faults that might disturb the operation.

The construction, set-up, supervision and maintenance of gas pressure pressure stations are subject to special (national) technical rules which should be strictly observed, in Germany those given by the DVGW-Worksheets G 490, G 491 and G 495.

The frequency of periodical maintenance of gas pressure regulator RMG 512 should be determined according to the prevailing conditions and the type and composition of the gaseous medium. Therefore, no fixed maintenance intervals are being prescribed. We refer to the maintenance cycles stated in the DVGW worksheet G 495.


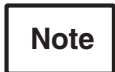
For maintenance all parts are to be cleaned and subjected to a thorough visual inspection. A visual inspection should not be omitted when the course of operation or functional tests have shown lack of regulating accuracy.

Particular care should be given to the checking of sealings and diaphragms, as well as carrying and moving parts. Damaged parts should be replaced by new ones.
The item numbers referred to in the maintenance instructions are identical with those of spare parts drawings and spare parts lists.

We recommend to keep all parts that are specially marked in the spare parts lists in stock for prompt maintenance availability.

2. Safety symbols

Safety symbols include the following **key words** in these operating instructions:

indication	used for:
	risk of danger to equipment and personnell
	important additional information

3. Special Maintenance Hints

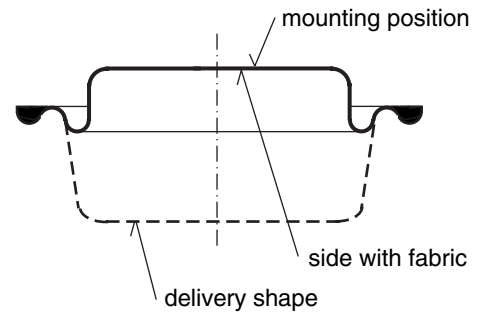


Before beginning with dismantling, all internal chambers have to be depressurized.

3.1 for RMG 512b and RMG 512c

- pre-formed diaphragm (31/131)

Slightly grease thick diaphragm edge, Place diaphragm in the correct mounting position (as shown in scetch), and slip it over the diaphragm plate (11/111). The fabric side (marked with extra print) must rest on the diaphragm plate. Push rolling material down between diaphragm plate and body (15/115).



Do not use any pointed objects!

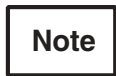
- greasing chambers (45/145)

The greasing chambers in front of both guiding rings (46/146) should be completely filled with silicone grease (45/145).

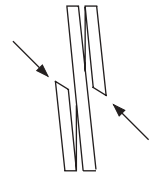
3.2 only for RMG 512b

- supporting ring (43) used for DN 25 and DN 50

Check the exact position of the ring loops and ring ends!



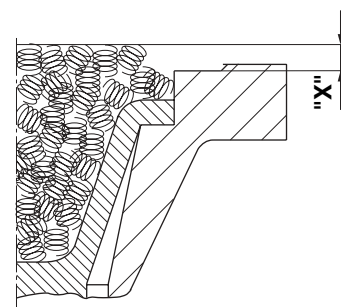
Both slanted ends must perk outward as shown in the scetch!



- wire coils (99) for regulators with outlet duct

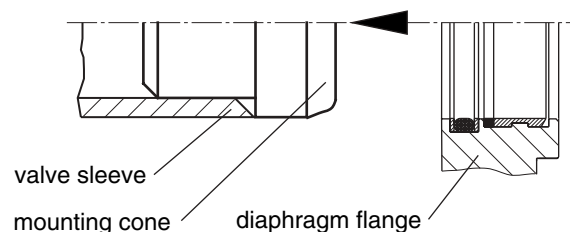
In general, the noise-reducing outlet duct needs no maintenance. If, however, the expansion plates (88/89) are removed from the duct body (81), take care that the wire coils (99) are tightly packed back into the body again: Fill the wire coils up to level "X" over the brim of the body (81), and then press down by screwing on the expansion plates (217, 218) .

outlet diameter	"X" in mm
DN 100	8
DN 150	10
DN 200	12
DN 250	16
DN 300	16



3.2.1 version with prevention of reverse flow

- When mounting the diaphragm flange (34) onto the valve sleeve (65), use a mounting cone (see 3.6) to prevent damage to the sealing and guiding elements (43, 44, 46).



3.3 only for RMG 512c

- Valve cone (167) and perforated expansion piece (171). Dismantle and mount via mounting screw (see 3.6)

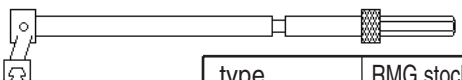
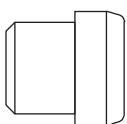
3.4 torque values for screws M_A in Nm

item no. RMG 512b	size									
	25/25	25/100	25/150	50/50	50/150	50/200	80/80	80/250	100/100	100/300
12	4			8			8		15	
32	100			250			250		500	
41	30			100			160		250	
91	-	30	55	-	55	55	-	100	-	100
RMG 512c	150/150	150/300	150/400	200/200	200/400	200/500				
112	15			15						
132	500			1150						

3.5 lubricants

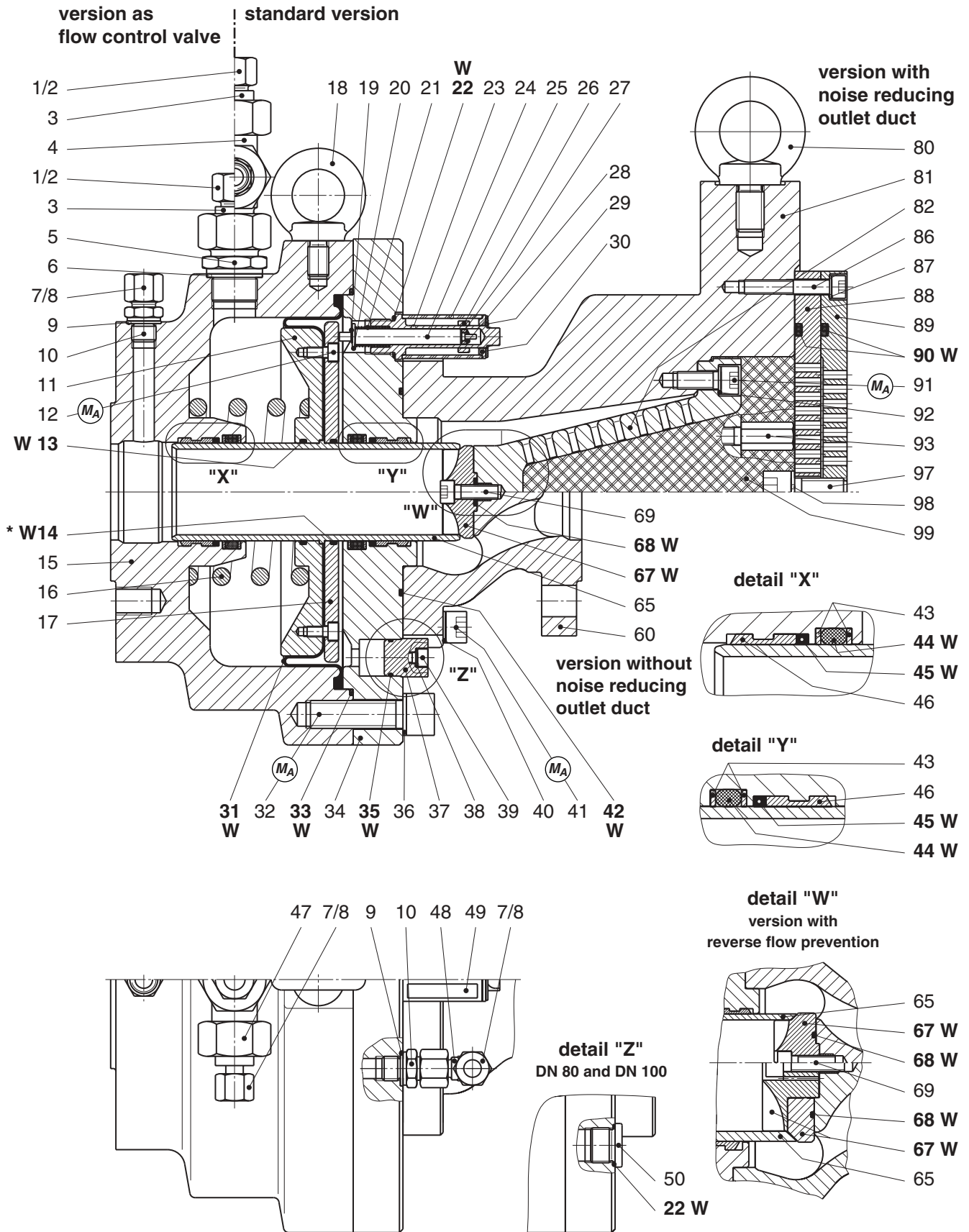
parts	lubricant	RMG stock no.
all o-rings and thick edge of pre-formed diaphragm	silicone grease	00 027 081 (tube 0,1kg)
grease depots, gliding areas of the valve sleeve, valve sleeve sealings	silicone grease	00 027 052
all screw connections and pipe connections	mounting grease	00 028 267

3.6 mounting tools

item no.						tool		
RMG512b				RMG512c				
DN25	DN50	DN80	DN100	DN150	DN200			
						torque spanner		
						torque	RMG stock no.	
12	12	12	12	112	112	4 - 20 Nm	12 132 313	
32, 41, 91						20 - 100 Nm	00 026 192	
	32, 41, 91	32, 41, 91				38 - 407 Nm	00 026 569	
			32, 41, 91	132		100 - 600 Nm	00 026 316	
					132	750 - 2000 Nm	00 028 397	
						hexagonal head for torque spanner		
						size (mm)	RMG stock no.	
12						SW 4	12 132 314	
	12	12				SW 5	12 132 315	
41			12	112	112	SW 6	00 026 195	
32	41					SW 10	00 026 197	
		41				SW 12	00 026 904	
	32	32	41			SW 14	00 026 571	
			32			SW 17	00 026 572	
				132		SW 19	00 027 000	
					132	SW 22	00 028 398	
								
91(DN100)						special insert	type	
91(DN150)	91						SW 6-7/16	RMG stock no.
		91	91				SHD-S-8	00 026 706
							SW 10-7/16	00 027 078
								
65						mounting cone	Teile - Nr.	
	65						10 002 218	
		65					10 013 547	
			65				19 081 843	
							10 013 647	
						167, 171	mounting screw RMG stock no. 10 000 725	

4.1 Spare parts RMG 512b

4.1.1 Spare parts drawing



*) Only for version as flow control valve DN 25 and DN 50
 MA please use values stated in torque table on page 5
 W parts are to be held in stock for maintenance

4.1.2 Spare parts list RMG 512b

item no.	description	amt..	W	material	RMG part no.			
					DN 25	DN 50	DN 80	DN 100
1	cap nut	1		St	00 030 804	00 030 804	00 030 807	00 030 807
2	compression joint	1		St	00 030 904	00 030 904	00 030 906	00 030 906
3	reduction	1		St	00 031 813	00 031 858	00 032 806	00 032 806
4	adapter	1		St	00 030 606	00 030 617	00 030 621	00 030 621
5	threaded adapter	1		St	00 030 140	00 030 117	00 030 143	00 030 143
6	sealing washer	1		LM	00 018 688	00 018 790	00 018 683	00 018 683
7	cap nut	3		St	00 030 803	00 030 803	00 030 803	00 030 803
8	compression joint	3		St	00 030 903	00 030 903	00 030 903	00 030 903
9	sealing washer	2		LM	00 018 842	00 018 842	00 018 842	00 018 842
10	threaded adapter	2		St	00 030 111	00 030 111	00 030 111	00 030 111
11	diaphragm plate	1		LM	10 013 484	10 013 534	10 013 584	10 013 634
12	cylindrical screw	6		St	00 010 318			
12	cylindrical screw	12		St		00 010 596		
12	cylindrical screw	16		St			00 010 596	00 010 355
13	o-ring	1	W	KG	00 020 430	00 020 413	00 020 414	00 021 016
14	o-ring	1	W	KG	00 020 430	00 020 413		
15	body, at option:							
15	PN 25 and PN 40	1		GS	10 013 472	10 013 522	10 013 572	10 013 622
15	ANSI 300 RF	1		GS	10 013 475	10 013 525	10 013 575	10 013 625
15	ANSI 300 RJ	1		GS	10 013 478	10 013 526	10 013 576	10 013 626
15	ANSI 600 RF	1		GS	10 013 477	10 013 527	10 013 577	10 013 627
15	ANSI 600 RJ	1		GS	10 013 478	10 013 528	10 013 578	10 013 628
16	spring	1		FSt	10 013 287	10 013 387	10 013 587	10 013 637
17	mounting plate	1		LM	10 013 486			
17	mounting plate with cyl. screw			LM/St		10 013 539	10 013 590	10 013 640
18	ring bolt	1		St	00 010 487	00 010 021	00 010 003	00 010 003
19	safety washer	1		St	00 019 140	00 019 140	00 019 140	00 019 140
20	washer	1		St	00 014 082	00 014 082	00 014 082	00 014 082
21	spring	1		FSt	10 013 284	10 013 384	19 081 838	19 081 838
22	o-ring	1	W	KG	00 020 382	00 020 382		
22	o-ring	2	W	KG			00 020 382	00 020 382
23	casing for travel indicator	1		Ms	10 013 280	10 013 380	10 013 639	10 013 639
24	indicating pin	1		Ms	10 013 491	10 013 541	10 013 641	10 013 641
25	looking glass	1		PGL	10 013 283	10 013 383	10 013 642	10 013 642
26	magnet	1		Oxit	00 027 043	00 027 043	00 027 043	00 027 043

W parts are to be held in stock for maintenance

material key

St ... steel	LM ... light metal	SSt ... foam-like plastic material
NSt ... stainless steel	Ms ... brass	K ... plastic material
FSt ... spring steel	Cu ... copper	KG ... rubber-like plastic material
NFSt ... stainless spring steel	Bz ... bronze	KGT ... rubber-like plastic material with coating
GS ... cast steel	GLM ... cast light metal	KV ... rubber-like plastic material (NBR)
GGG ... spheroidal graphite cast iron	GMs ... cast brass	KT ... special plastic (FP)
GZn ... cast zinc	AIBz ... aluminium bronze	PGL ... plexiglass
GBz ... cast bronze		

item no.	description	amt.	W	material	RMG part no.				
					DN 25	DN 50	DN 80	DN 100	
27	magnet	1		Oxit	00 027 044	00 027 044	00 027 044	00 027 044	
28	Seeger fixing disc	1		FSt	00 027 063	00 027 063	00 027 063	00 027 063	
29	Seeger circlip	1		FSt	00 019 172	00 019 172	00 019 172	00 019 172	
30	sealing ring	1		LM	10 013 286	10 013 286	10 013 286	10 013 286	
31	pre-formed diaphragm	1	W	KG	10 013 485	10 013 535	10 013 585	10 013 635	
32	cylindrical screw	11		St	00 010 330				
32	cylindrical screw	12		St		00 010 332			
32	cylindrical screw	20		St			00 010 345	00 010 354	
33	o-ring	1	W	KG	00 020 827	00 020 843	00 020 838	00 020 866	
34	connecting flange	1		St	10 013 480	10 013 530	10 013 580	10 013 630	
35	o-ring	1	W	KG	00 020 415	00 020 415			
36	safety washer	11		St	00 014 114				
36	safety washer	12		St		00 014 116			
36	safety washer	20		St			00 014 116	00 014 124	
37	screw plug	1		Ms	10 013 549	10 013 549			
38	safety washer	2		St	00 014 123	00 014 123			
39	cylindrical screw	2		St	00 010 055	00 010 055			
40	safety washer	8		St	00 014 112	00 014 114	00 014 115	00 014 116	
41	cylindrical screw	8		St	00 010 324	00 010 330	00 010 331	00 010 332	
42	o-ring	1	W	KG	00 020 246	00 020 335	00 020 249	00 020 262	
43	supporting ring	4		KT	00 021 024	00 021 025	00 021 019	00 021 017	
44	o-ring	2	W	KG	00 020 252	00 020 596	00 020 976	00 021 016	
45	silicone grease		W		00 027 052	00 027 052	00 027 052	00 027 052	
46	guiding ring	2		KT	00 021 014	00 021 009	00 021 018	00 021 015	
47	reduction piece	1		St	00 031 852	00 031 851	00 031 861	00 031 861	
48	adapter	1		St	00 031 207	00 031 207	00 031 207	00 031 207	
49	valve travelling scale	1		K	10 013 285	10 013 385	10 013 594	10 013 644	
50	screw plug	1		St			00 010 539	00 010 539	
	<i>version without expansion piece</i>								
60	valve body, at option:								
60	PN 25 and PN 40	1		GS	10 013 242	10 013 342	10 000 434	10 000 534	
60	ANSI 300 RF	1		GS	10 013 245	10 013 345	10 000 444	10 000 544	
60	ANSI 300 RJ	1		GS	10 013 246	10 013 346	10 000 446	10 000 546	
60	ANSI 600 RF	1		GS	10 013 247	10 013 347	10 000 448	10 000 548	
60	ANSI 600RJ	1		GS	10 013 248	10 013 348	10 000 450	10 000 550	
	<i>version without reverse flow protection</i>								
65	valve sleeve	1		St	10 013 481	10 013 531	10 013 581	10 013 631	
67	valve cone	1	W	K	10 013 483	10 013 533	10 013 583	10 013 633	
68	o-ring	1	W	KG	00 020 231	00 020 234	00 020 235	00 020 236	
69	cylindrical screw	1		St	00 010 361	00 010 324	00 010 325	00 010 328	
	<i>version with reverse flow protection</i>								
65	valve sleeve	1		St	10 013 496	10 013 546	10 013 596	10 013 646	
67	valve cone	1	W	K	10 013 457	10 013 507	10 013 557	10 013 607	
68	o-ring	1	W	KG	00 020 310	00 020 237	00 020 425	00 020 246	
69	cylindrical screw	1		St	00 010 318	00 010 324	00 010 441	00 010 556	

item no.	description	amt.	W	material	RMG part no.					
					DN 25/100	DN 25/150	DN 50/150	DN 50/200	DN 80/250	DN 100/300
	<i>version with expansion</i>									
80	ring bolt	1		St	00 010 003	00 010 003	00 010 003	00 010 003	00 010 003	00 010 003
81	expansion body	1		GS (St)	10 013 251	10 013 250	10 006 830	10 013 350	10 006 445	10 006 505
82	expansion cone	1		GS (St)	10 006 791	10 006 345	10 006 841	10 006 405	10 006 471	10 006 531
86	cylindrical screw	4		St	00 010 389	00 010 389	00 010 389	00 010 389	00 010 389	
86	cylindrical screw	8		St						00 010 389
87	safety washer	4		St	00 014 112	00 014 112	00 014 112	00 014 112	00 014 112	
87	safety washer	8		St						00 014 112
88	expansion plate 1	1		St	10 006 782	10 006 329	10 006 329	10 006 389	10 006 449	10 006 509
89	expansion plate 2	1		St	10 006 783	10 006 331	10 006 331	10 006 391	10 006 451	10 006 511
90	o-ring	2	W	KG	00 020 261	00 020 433	00 020 433	00 020 314	00 020397	00 020 339
91	cylindrical screw	4		St	00 010 324	00 010 325				
91	cylindrical screw	6		St			00 010 325	00 010 325	00 010 393	
91	cylindrical screw	8		St						00 010 393
92	safety washer	4		St	00 014 112	00 014 113				
92	safety washer	6		St			00 014 113	00 014 113	00 014 114	
92	safety washer	8		St						00 014 114
93	distance bolt	2		St	10 006 452	10 006 452				
93	distance bolt	3		St			10 006 452			
93	distance bolt	4		St				10 006 452	10 006 452	10 006 452
97	cylindrical screw	1		St	00 010 394	00 010 394	00 010 394	00 010 394	00 010 394	00 010 394
98	safety washer	1		St	00 014 116	00 014 116	00 014 116	00 014 116	00 014 116	00 014 116
99	wire spring	0,5kg		FSt	00 026 415					
99	wire spring	1,1kg		FSt		00 026 415				
99	wire spring	1,3kg		FSt			00 026 415			
99	wire spring	1,8kg		FSt				00 026 361		
99	wire spring	3,4kg		FSt					00 026 361	
99	wire spring	5,3kg		FSt						00 026 361
99	non-corrosive wire spring			NFSt	00 026 725	00 026 725	00 026 725	00 026 362	00 026 362	00 026 362

4.1.3 parts for maintenance

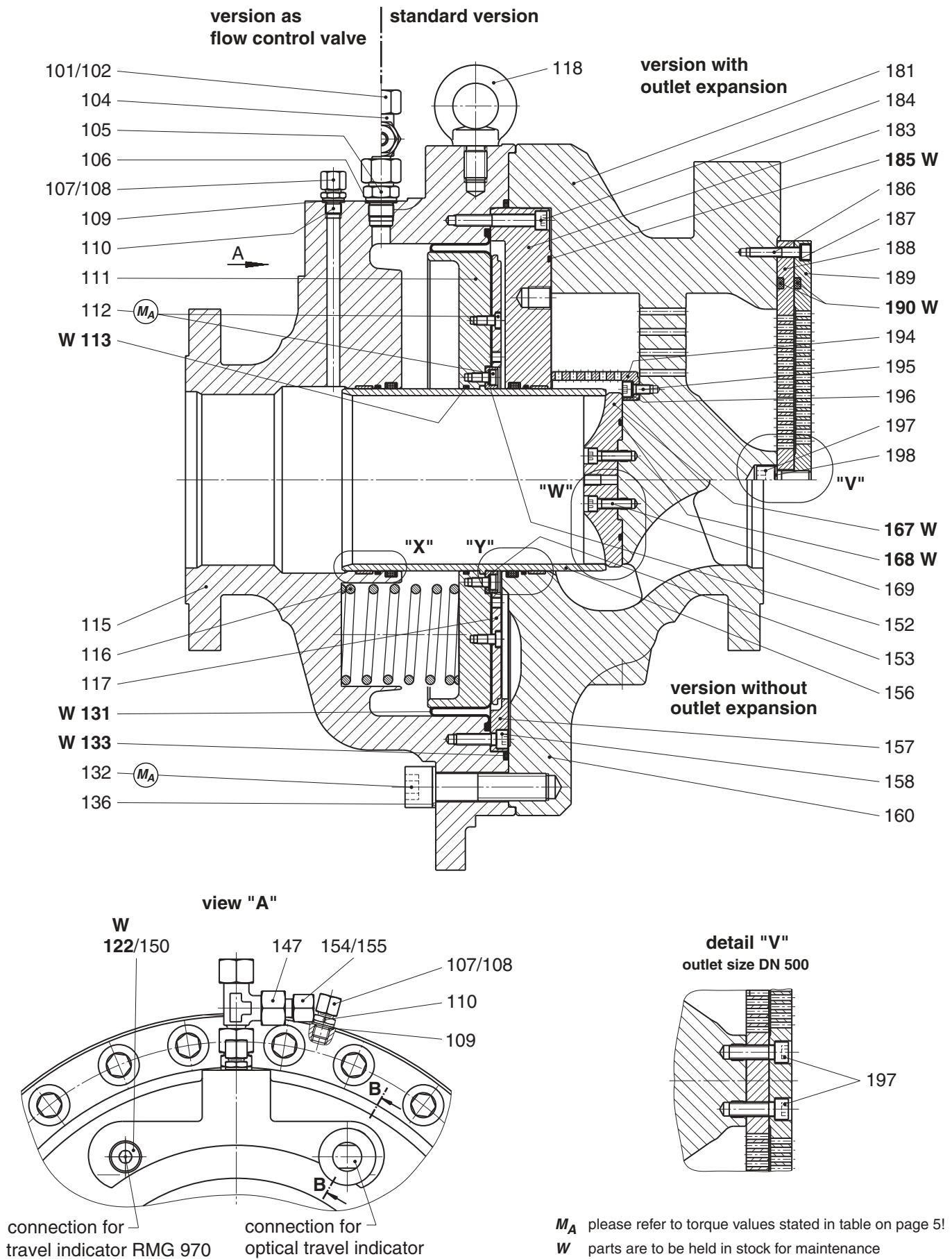
item no.	description	amount	RMG part no.			
			DNE 25	DNE 50	DNE 80	DNE 100
13	o-ring	1	00 020 430	00 020 413	00 020 414	00 021 016
14	o-ring (only for version as flow control valve)	1	00 020 430	00 020 413		
22	o-ring	1	00 020 382	00 020 382		
22	o-ring	2			00 020 382	00 020 382
31	pre-formed diaphragm	1	10 013 485	10 013 535	10 013 585	10 013 635
33	o-ring	1	00 020 827	00 020 843	00 020 838	00 020 866
35	o-ring	1	00 020 415	00 020 415		
42	o-ring	1	00 020 246	00 020 335	00 020 249	00 020 262
44	o-ring	2	00 020 252	00 020 596	00 020 976	00 021 016
45	silicone grease		00 027 052	00 027 052	00 027 052	00 027 052
	<i>version without reverse flow prevention</i>					
67	valve cone	1	10 013 483	10 013 533	10 013 583	10 013 633
68	o-ring	1	00 020 231	00 020 234	00 020 235	00 020 236
	<i>version with reverse flow prevention</i>					
67	valve cone	1	10 013 457	10 013 507	10 013 557	10 013 607
68	o-ring	1	00 020 310	00 020 237	00 020 425	00 020 246

*version **with** outlet expansion*

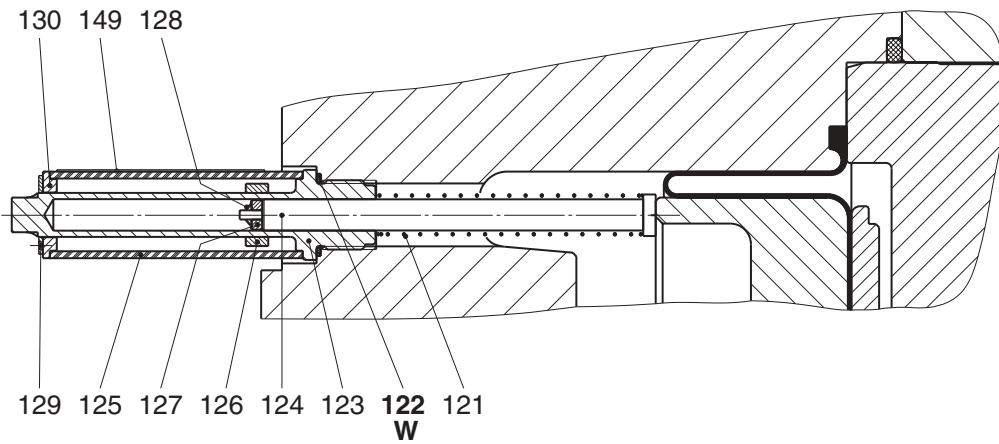
item no.	description	amount	RMG part no.					
			DN 25/100	DN 25/150	DN 50/150	DN 50/200	DN 80/250	DN 100/300
90	o-ring	2	00 020 261	00 020 433	00 020 433	00 020 314	00 020 397	00 020 339

4.2 Spare parts RMG 512c

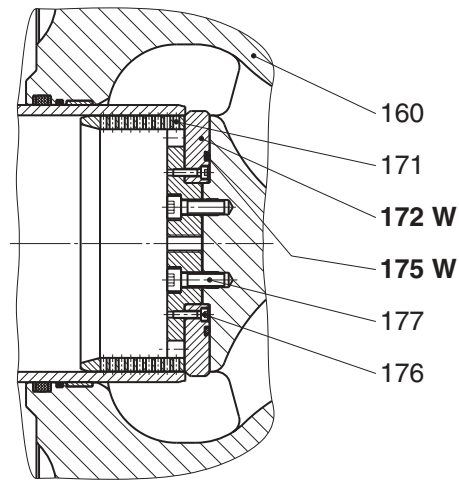
4.2.1 Spare parts drawing



cut-away view B - B (turned 30°)
optical travel indicator

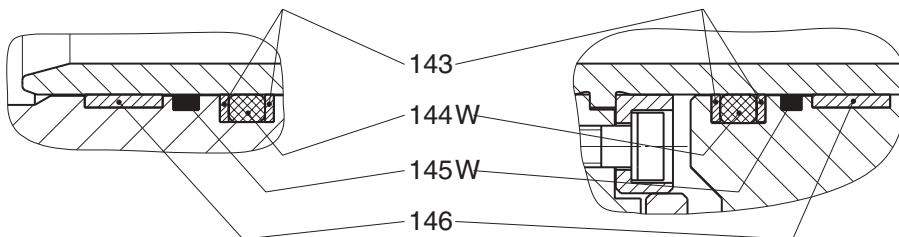


detail "W"
version with perforated expansion piece



detail "X"

detail "Y"



M_A please use torque values stated in the table on page 5!
W parts are to be held in stock for maintenance.

4.2.2 Spare parts list

item no.	description	amount	W	material	RMG part no.	
					DN 150	DN 200
101	cap nut	1		St	00 030 807	00 030 807
102	compression joint	1		St	00 030 906	00 030 906
104	adapter	1		St	00 030 615	00 030 615
105	threaded adapter	1		St	00 030 112	00 030 112
106	sealing washer	1		LM	00 018 787	00 018 787
107	cap nut	2		St	00 030 803	00 030 803
108	compression joint	2		St	00 030 903	00 030 903
109	sealing washer	2		LM	00 018 842	00 018 842
110	threaded adapter	2		St	00 030 111	00 030 111
111	diaphragm plate	1		LM	10 026 872	10 026 972
112	cylindrical screw	32		St	00 010 355	00 010 355
113	o-ring	1	W	KG	00 020 514	00 020 329
115	body, at option:					
115	PN 25	1		GS		10 026 930
115	PN 40	1		GS	10 026 831	10 026 931
115	ANSI 300 RF	1		GS	10 026 832	10 026 932
115	ANSI 300 RJ	1		GS	10 026 833	10 026 933
115	ANSI 600 RF	1		GS	10 026 834	10 026 934
115	ANSI 600 RJ	1		GS	10 026 835	10 026 935
116	spring	5		NFSt	00 027 894	
116	spring	6		NFSt		10 013 887
117	mounting plate	1		LM	10 026 874	10 026 974
118	ring bolt	1		St	00 010 590	00 010 047
121	spring	1		FSt	19 081 973	10 013 893
122	o-ring	2	W	KG	00 020 382	00 020 382
123	housing for travel indicator	1		Ms	10 013 689	10 013 889
124	indicating pin	1		Ms	10 013 691	10 013 891
125	looking glass	1		PGL	19 081 972	10 013 892
126	magnet	1		Oxit	00 027 043	00 027 043
127	magnet	1		Oxit	00 027 044	00 027 044
128	Seeger fixing disc	1		FSt	00 027 063	00 027 063
129	Seeger circlip	1		FSt	00 019 172	00 019 172
130	sealing ring	1		LM	10 013 286	10 013 286
131	pre-formed diaphragm	1	W	KG	10 000 688	10 013 885
132	cylindrical screw	24		St	00 010 665	
132	cylindrical screw	29		St		00 010 664
133	o-ring	1	W	KG	00 021 354	00 021 349

item no.	description	amount	W	material	RMG part no.	
					DN 150	DN 200
136	safety washer	24		St	00 010 129	
136	safety washer	29		St		00 014 140
143	supporting ring	4		KT	00 021 217	00 021 235
144	o-ring	2	W	KG	00 021 215	00 021 542
145	silicone grease		W		00 027 052	00 027 052
146	guiding ring	2		KGT	00 021 353	00 021 348
147	reduction	1		St	00 031 809	00 031 809
149	valve travelling scale	1		K	10 013 694	10 013 894
150	screw plug	1		St	00 010 539	00 010 539
152	safety washer	8		St	00 014 112	00 014 112
153	mounting ring	1		LM	10 026 875	10 026 975
154	cap nut	1		St	00 030 805	00 030 805
155	compression joint	1		St	00 030 904	00 030 904
156	valve sleeve	1		St	10 026 876	10 026 976
	<i>version without expansion</i>					
157	circlip	1		St	10 026 869	10 026 969
158	cylindrical screw	8		St	00 010 441	00 010 441
160	valve body, at option:					
160	PN 25	1		GS		10 026 940
160	PN 40	1		GS	10 026 841	10 026 941
160	ANSI 300 RF	1		GS	10 026 842	10 026 942
160	ANSI 300 RJ	1		GS	10 026 843	10 026 943
160	ANSI 600 RF	1		GS	10 026 844	10 026 944
160	ANSI 600 RJ	1		GS	10 026 845	10 026 945
	<i>version with valve cone</i>					
167	valve cone	1	W	K	10 026 878	10 026 978
168	o-ring	1	W	KG	00 021 356	00 021 351
169	cylindrical screw	4		St	00 010 098	
169	cylindrical screw	10		St		00 010 441
	<i>version with perforated expansion sleeve</i>					
171	perforated expansion sleeve	1		NSt	10 026 881	10 026 981
172	sealing washer	1	W	K	10 026 882	10 026 982
175	o-ring	1	W	KG	00 021 356	00 021 351
176	cylindrical screw	4		St	00 010 382	00 010 602
177	cylindrical screw	4		St	00 010 551	
177	cylindrical screw	10		St		00 010 207

version *with* noise-reducing outlet duct

item no.	description	amt.	W	mat.	RMG part no.			
					DN 150/300	DN 150/400	DN 200/400	DN 200/500
181	body of expansion duct	1		GS	10 026 860	10 026 865	10 026 960	10 026 965
183	leading flange	1		St	10 026 859	10 026 859	10 026 959	10 026 959
184	cylindrical screw	8		St	00 010 610	00 010 610	00 010 386	00 010 386
185	o-ring	1	W	KG	00 021 355	00 021 355	00 021 350	00 021 350
186	cylindrical screw	8		St	00 010 433	00 010 433	00 010 433	
186	cylindrical screw	12		St				00 010 433
187	safety washer	8		St	00 014 112	00 014 112	00 014 112	
187	safety washer	12		St				00 014 112
188	expansion plate 1	1		St	10 026 862	10 006 569	10 026 962	10 026 967
189	expansion plate 2	1		St	10 026 863	10 006 571	10 026 963	10 026 968
190	o-ring	2	W	KG	00 020 339	00 020 424	00 020 424	00 021 243
194	expansion sleeve	1		NSt	10 026 864	10 026 864	10 026 964	10 026 964
195	cylindrical screw	8		St	00 008 176	00 08 176		
195	cylindrical screw	10		St			00 008 176	00 008 176
196	safety washer	8		St	00 014 112	00 014 112		
196	safety washer	10		St			00 014 112	00 014 112
197	cylindrical screw	1		St	00 010 394	00 010 394	00 010 394	
197	cylindrical screw	4		St				00 010 556
198	safety washer	1		St	00 014 116	00 014 116	00 014 116	

4.2.3 Parts for maintenance work

item no.	description	amount	RMG part no.	
			DN _E 150	DN _E 200
113	o-ring	1	00 020 514	00 020 329
122	o-ring	2	00 020 382	00 020 382
131	pre-formed diaphragm	1	10 000 688	10 013 885
133	o-ring	1	00 021 354	00 021 349
144	o-ring	2	00 021 215	00 021 542
145	silicone grease		00 027 052	00 027 052
	<i>version with valve cone</i>			
167	valve cone	1	10 026 878	10 026 978
168	o-ring	1	00 021 356	00 021 351
	<i>version with expansion sleeve</i>			
172	sealing washer	1	10 026 882	10 026 982
175	o-ring	1	00 021 356	00 021 351

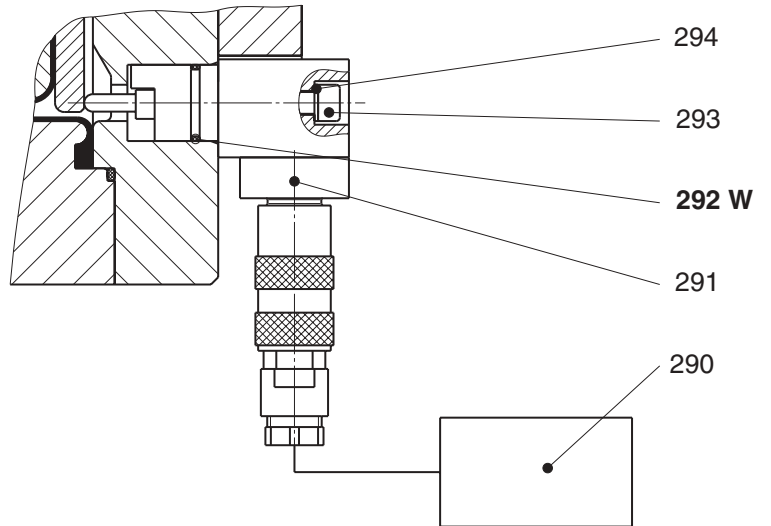
*version **with** noise reducing outlet duct*

item no.	description	amount	RMG part no.			
			DN 150/300	DN 150/400	DN 200/400	DN 200/500
185	o-ring	1	00 021 355	00 021 355	00 021 350	00 021 350
190	o-ring	2	00 020 339	00 020 424	00 020 424	00 021 243

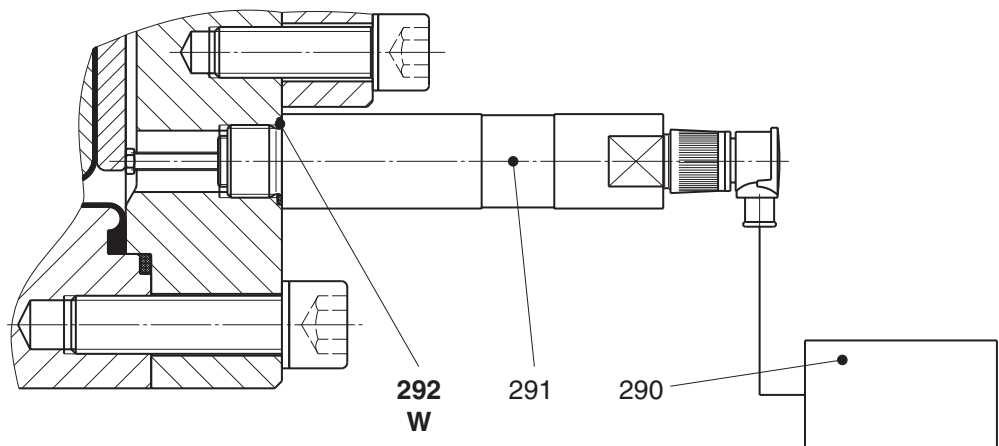
4.3 Spare parts for accessories

4.3.1 Spare parts drawing

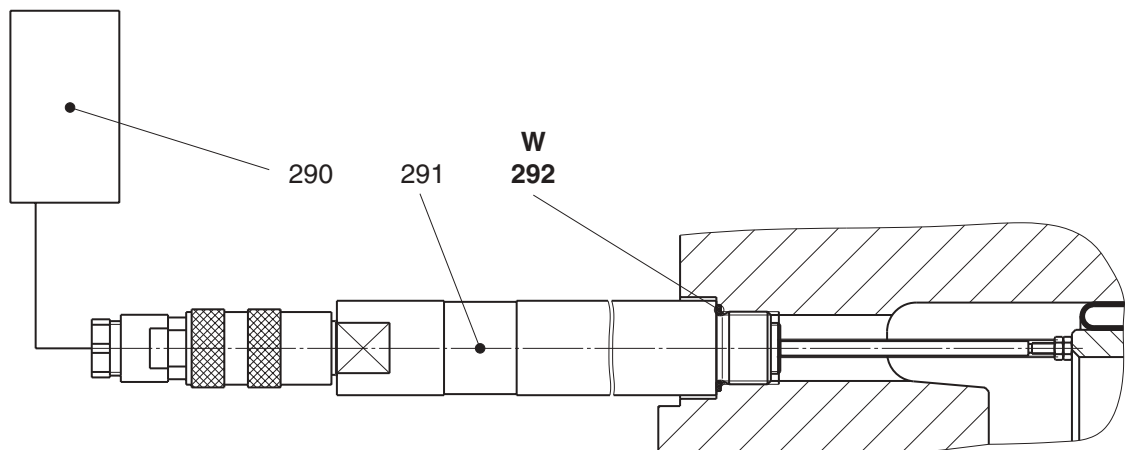
RMG 512b DN 25 and DN 50 with travel indicator RMG 970



RMG 512b DN 80 and DN 100 with travel indicator RMG 970



RMG 512c DN 150 and DN 200 with travel indicator RMG 970



W parts to be kept in stock for maintenance

4.3.2 Spare parts list for accessories

item no.	description	amt.	W	mat.	RMG part no.				
					DNE 25	DNE 50	DNE 80 DNE 100	DNE 150	DNE 200
290	signal transducer	1			81 001 154	81 001 154	81 001 154	81 001 154	81 001 154
291	travel indicator RMG 970	1			18 353 620	18 353 702	10 021 332	19 082 676	18 357 032
292	o-ring	1	W	KG	00 020 415	00 020 415	00 020 382	00 020 382	00 020 382
293	cylindrical screw	2		St	00 010 349	00 010 343			
294	safety washer	2		St	00 014 123	00 014 123			

4.3.3 Spare parts for maintenance

292	o-ring	1			00 020 415	00 020 415	00 020 382	00 020 382	00 020 382
------------	---------------	----------	--	--	-------------------	-------------------	-------------------	-------------------	-------------------

We supply you with products for gas pressure regulation:



RMG REGEL + MESSTECHNIK GMBH

Osterholzstrasse 45, D-34123 Kassel, Germany
Telephone (+49) 561 5007-0 • Fax (+49) 561 5007-107
gas pressure regulators and safety devices



RMG-GASELAN Regel + Meßtechnik GmbH

Julius-Pintsch-Ring 3, D-15517 Fürstenwalde, Germany
Telephone (+49) 3361 356-60 • Fax (+49) 3361 356-836
gas pressure regulating equipment, displacement meters, complete stations



Bryan Donkin RMG Gas Controls Ltd.

Enterprise Drive, Holmewood, Chesterfield S42 5UZ, England
Telephone (+44) 1246 501-501 • Fax (+44) 1246 501-500
gas pressure regulating equipment, below ground gas control modules



Bryan Donkin RMG Co. of Canada Ltd.

50 Clarke Street South, Woodstock, Ontario N4S 7Y5, Canada
Telephone (+1) 519 5398531 • Fax (+1) 519 5373339
domestic regulators and safety devices

The other RMG Companies:



RMG Messtechnik GmbH

Otto-Hahn-Strasse 5, D-35510 Butzbach, Germany
Telephone (+49) 6033 897-0 • Fax (+49) 6033 897-130
turbine meters, vortex meters, correctors, flow computers, odorizers



Karl Wieser GmbH

Anzinger Strasse 14, D-85560 Ebersberg, Germany
Telephone (+49) 8092 2097-0 • Fax (+49) 8092 2097-10

Betriebsstelle Beindersheim

Heinrich-Lanz-Strasse 9, D-67259 Beindersheim/Pfalz, Germany
Telephone (+49) 6233 3762-0 • Fax (+49) 6233 3762-40
data logging, monitor systems, danger alarm systems



WÄGA Wärme-Gastechnik GmbH

Osterholzstrasse 45, D-34123 Kassel, Germany
Telephone (+49) 561 5007-0 • Fax (+49) 561 5007-207
design and assembly of gas pressure regulating and metering stations



ZUG GAZOMET Sp. z o.o.

ul. Sarnowska 2, 63-900 Rawicz, Poland
Telephone (+48) 65 546 24 01 • Fax (+48) 65 546 24 08
ball valves, accessories, gas pressure regulating and metering stations

The RMG Group of Companies on the internet: <http://www.rmg.de>

Serving the Gas Industry - WORLDWIDE



We reserve the right for technical changes