



OPERATING AND MAINTENANCE INSTRUCTIONS/
SPARE PARTS

Version 07/2010

**Serving the Gas Industry
Worldwide**



Contents	Page
1. General information	3
1.1 Safety information	3
2. Specific maintenance instructions	4
2.1 Pressure-compensating diaphragm	4
2.2 Valve rod	5
2.3 Tightening torques	5
2.4 Lubricants	5
2.5 Screw locking devices	
3. Spare parts	
3.1.1 Spare parts drawings RMG 370 DN 25 and DN 50	6
3.1.2 Spare parts drawings RMG 370 DN 25 and DN 50	7, 8
3.2.1 Spare parts drawings RMG 370 DN 80, DN 100 and DN 150	9
3.2.2 Spare parts drawings RMG 370 DN 80, DN 100 and DN 150	10
3.3.1 Spare parts drawing regulating assembly 1	11
3.3.2 Spare parts list regulating assembly 1	12, 13
3.4.1 Spare parts drawing regulating assembly 2	14
3.4.2 Spare parts list regulating assembly 2	15, 16, 17
3.5.1.1 Spare parts drawing regulating assembly 1 with safety diaphragm	18
3.5.1.2 Spare parts drawing regulating assembly 2 with safety diaphragm	19
3.5.2 Spare parts lists regulating assemblies 1 and 2 with safety diaphragms	20
3.6.1.1 Spare parts drawing regulating assembly 3 for DN 80 and DN 100	21
3.6.1.2 Spare parts drawing regulating assembly 3 for DN 150	22
3.6.2 Spare parts list regulating assembly 3	23, 24
3.7.1 Spare parts drawing regulating assembly 0 for DN 25 and DN 50	25
3.4.2 Spare parts list regulating assembly 0 for DN 25 and DN 50	26, 27
3.8.1 Spare parts drawing regulating assembly 0 for DN 80	28
3.8.2 Spare parts list regulating assembly 0 for DN 80	29, 30
3.9.1.1 Spare parts drawing actuator K1a	31
3.9.1.2 Spare parts drawing detail Z	32
3.9.1.3 Spare parts drawing - SSV flap	32
3.9.1.4 Spare parts drawing actuator K2a	33
3.9.2 Spare parts drawing actuator K1a and K2a	34, 35
4. Parts for maintenance purposes	36

1. General information

All persons involved with the assembly, operation and/or maintenance of the RMG 370 gas pressure regulator must read and understand all of the following documents:

- Technical product information 370.00 — this RMG document contains the technical data and dimensions of the equipment as well as instructions concerning construction and mode of operation.
- General operating manual for gas pressure regulators and safety devices — this RMG document contains information on assembly and operation as well as general information on troubleshooting.
- Operating and maintenance instructions / spare parts 370.20 — this RMG document contains more detailed information on assembly and operation of the gas pressure regulator.

There are national laws and regulations for all sorts of jobs on gas pressure governors, from planning to maintenance. Be sure to comply. (In Germany, for instance, DVGW work sheets G 600, G 459/II, G 491 and G 495.)

Inspection and maintenance intervals depend mostly on operating conditions and the nature and properties of the gas. There are no general rules or recommendations for intervals. For Germany, we recommend to consider maintenance intervals as stated in DVGW work sheet G 495 in a first instance.

However, in the mid-term, intervals must be adapted to the requirements of each specific equipment.

During maintenance, components must be cleaned and then checked thoroughly. This is necessary even if there have not been any unusual observations during operation and/or functional testing. Checks must focus, in particular, on diaphragms and seals and all movable parts and their respective bearings. Any and all defective parts must be replaced with new ones. The same applies to O rings removed during disassembly.

Do not use any spare / wear parts and/or oils & lubricants not specifically recommended in the RMG operating and maintenance instructions for spare parts.


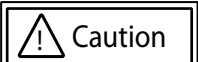
In the event spare / wear parts and/or lubricants & oils other than those specifically recommended are used, RMG shall not be liable for any defects and/or consecutive damages attributable to such use of illegal parts, lubricants, oils etc.

Item numbers mentioned in the specific operating and maintenance instructions correspond with the numbers in the spare parts lists and drawings.

Some parts in the lists and drawings are marked with a letter "W". We recommend to always have a reserve of those parts in stock for maintenance purposes. Those spare parts are put together in another separate list at the end of the spare parts list.

1.1 Safety information

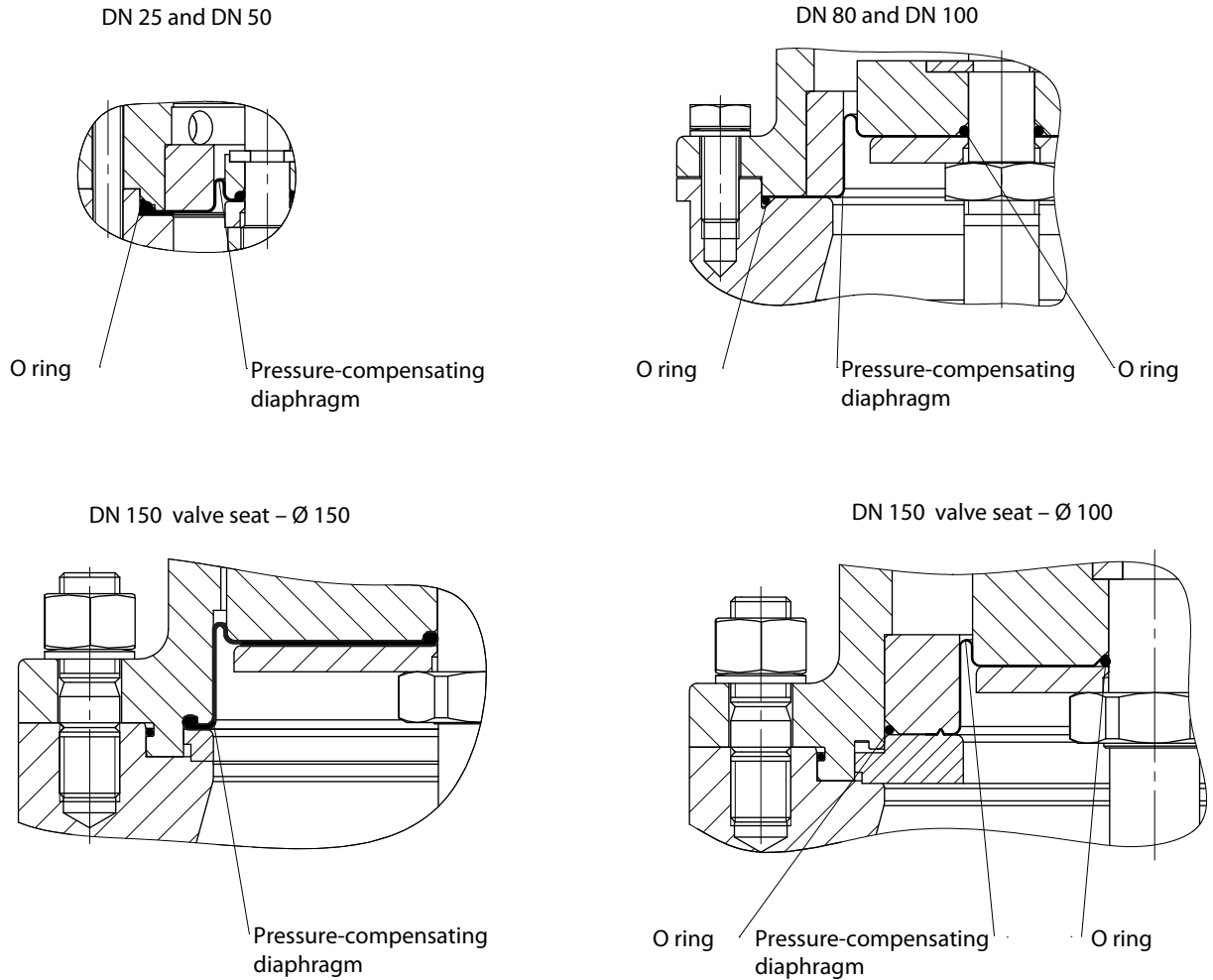
In this manual, safety information is highlighted by means of the following titles and eye catchers:

Eye catcher	used for:
 Danger	Danger to life and limb
 Caution	Danger of damage to property and/or the environment
Note	Important additional information

2. Specific maintenance instructions

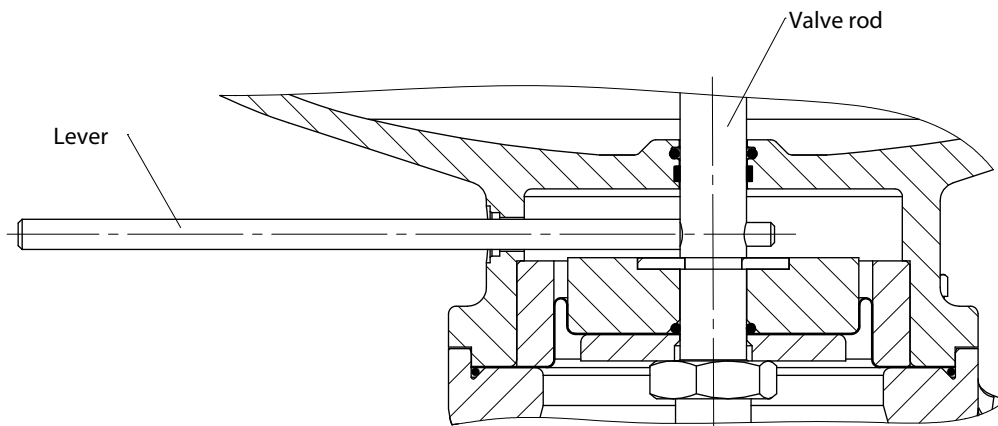
2.1 Pressure-compensating diaphragm

During assembly, observe the correct mounting position of the valve.



2.2 Valve stem

In order to secure the diaphragm against unintentional movements when loosening and/or tightening the nut, secure the valve stem accordingly. The valve stem has a transverse bore for that purpose.



2.3 Tightening torques MA

Screws & bolts – item no.	Tightening torques M_A in Nm	Screws & bolts – item no.	Tightening torques M_A in Nm
1	20	329	10
4	20	331	20
9	20	360	30
24	30	363	10
37	20	372	20
60	30	390	10
63	40	395	20
68	20	434	20
70	40	445	10
81	40	457	30
111	20	459	30
140	10	468	20
144	20	514	30
145	20	516	20
215	20	517	20
219	10	518	10
227	10	526	20
237	20	545	20
247	20	616	10
309	10	618	20
311	20		

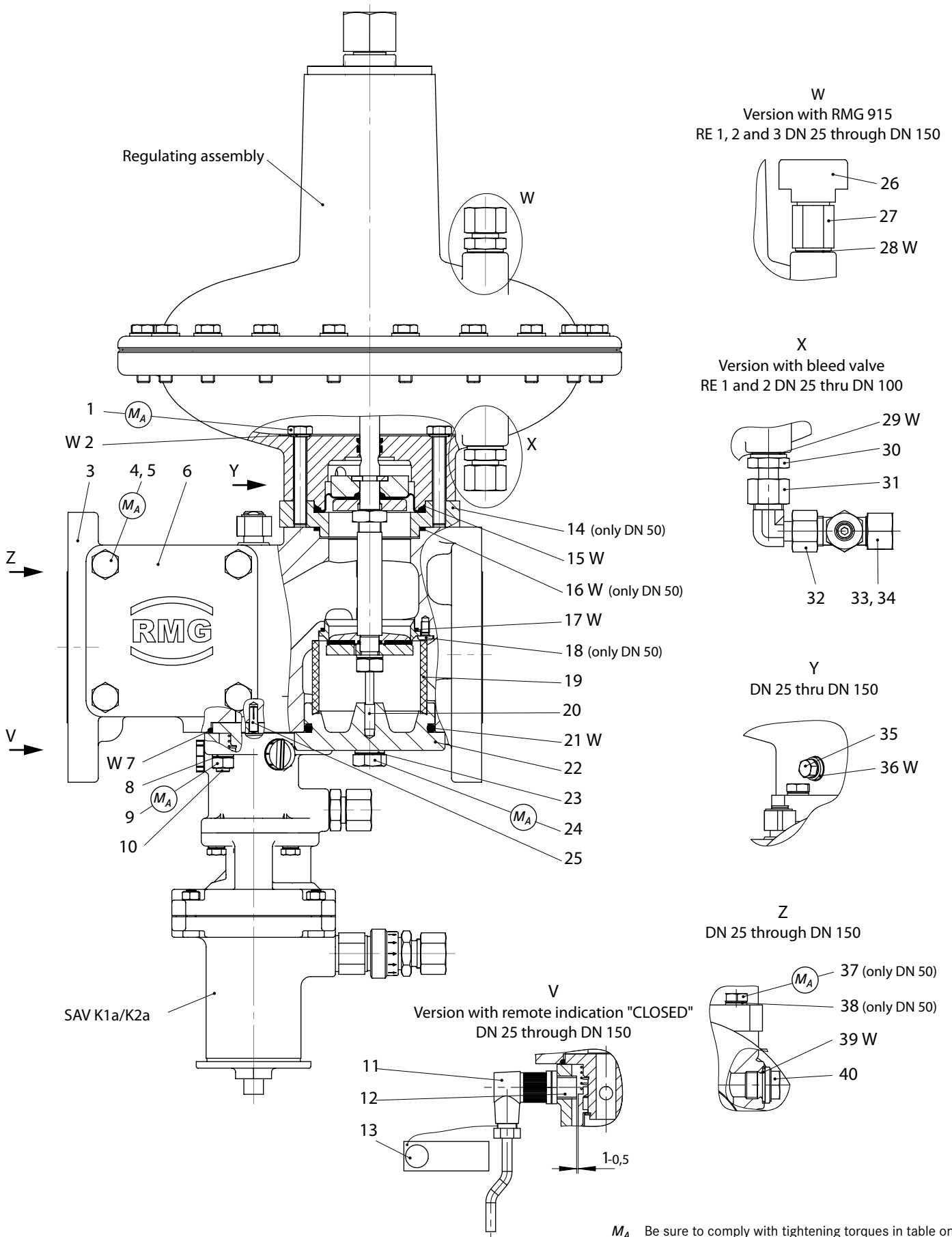
2.4 Lubricants

Components	Lubricants	RMG part no.
all O rings and all sliding surfaces mounting and loop areas of diaphragms	Silicone grease (apply a thin film)	27081
Balls (612, 621) all fastening screws and screwed pipe connections	Silicone grease	27081

2.5. Screw locking methods & devices

Components	Method/device	RMG part no.
Pressurized section (613)	WEICONLOCK 302-21	525045
Threaded pin (300, 320)	WEICONLOCK 302-70	525046

3.1.1 Spare parts drawings RMG 370 DN 25 and DN 50
drawing shows DN 50 regulating assembly 1



3.1.2 Spare parts drawings RMG 370 DN 25 and DN 50

Item no.	Denomination	Number	W	Materials	Part no.	
					DN 25	DN 50
1	Hex screw	4		St	10398	10398
2	Sealing ring	4	W	LM	18710	18710
3	Body, optional:					
3	Body with SSV; PN16	1		GGG	15055018	15056030
3	Body with SSV; PN16	1		GS	15055003	15056014
3	Body with SSV; PN16	1		GS	15055007	15056025
3	Body with SSV; CLASS 150	1		GGG	15055001	15056013
3	Body with SSV; CLASS 150	1		GS	15055004	15056010
3	Body with SSV; CLASS 150	1		GS	15055008	15056027
3	Body without SSV; PN16	1		GGG	15055019	15056019
3	Body without SSV; PN16	1		GS	15055005	15056023
3	Body without SSV; PN16	1		GS	15055009	15056028
3	Body without SSV; CLASS 150	1		GGG	15055002	15056024
3	Body without SSV; CLASS 150	1		GS	15055006	15056051
3	Body without SSV; CLASS 150	1		GS	15055010	15056029
4	Hex screw	8		St	10630	10630
5	Lock washer	8		St	14121	14121
6	SSV cover, optional:					
6	SSV cover	2		GGG	15056031	15056031
6	SSV cover	2		GS	15056032	15056032
6	SSV cover	2		GS	15056033	15056033
7	O ring	1	W	KG	20832	20832
8	Lock washer	3		St	14122	14122
9	Hex nut	3		St	5559	5559
10	Locking screw	3		St	12473	12473
11	Cable box	1			24099	24099
12	Proximity switch	1			24160	24160
13	Relay, optional:					
13	Relay 230 V, 1 channel	1			24402	24402
13	Relay 230 V, 2 channels	1			24403	24403
14	Clamping plate	1		St		15056008
15	O ring	1	W	KG	21261	21261
16	O ring	1	W	KG		20513
17	O ring	1	W	KG	520110	21258
18	Flat head screw	3		St		11145
19	Metal foam ring	1		NSt	15025006	15026027

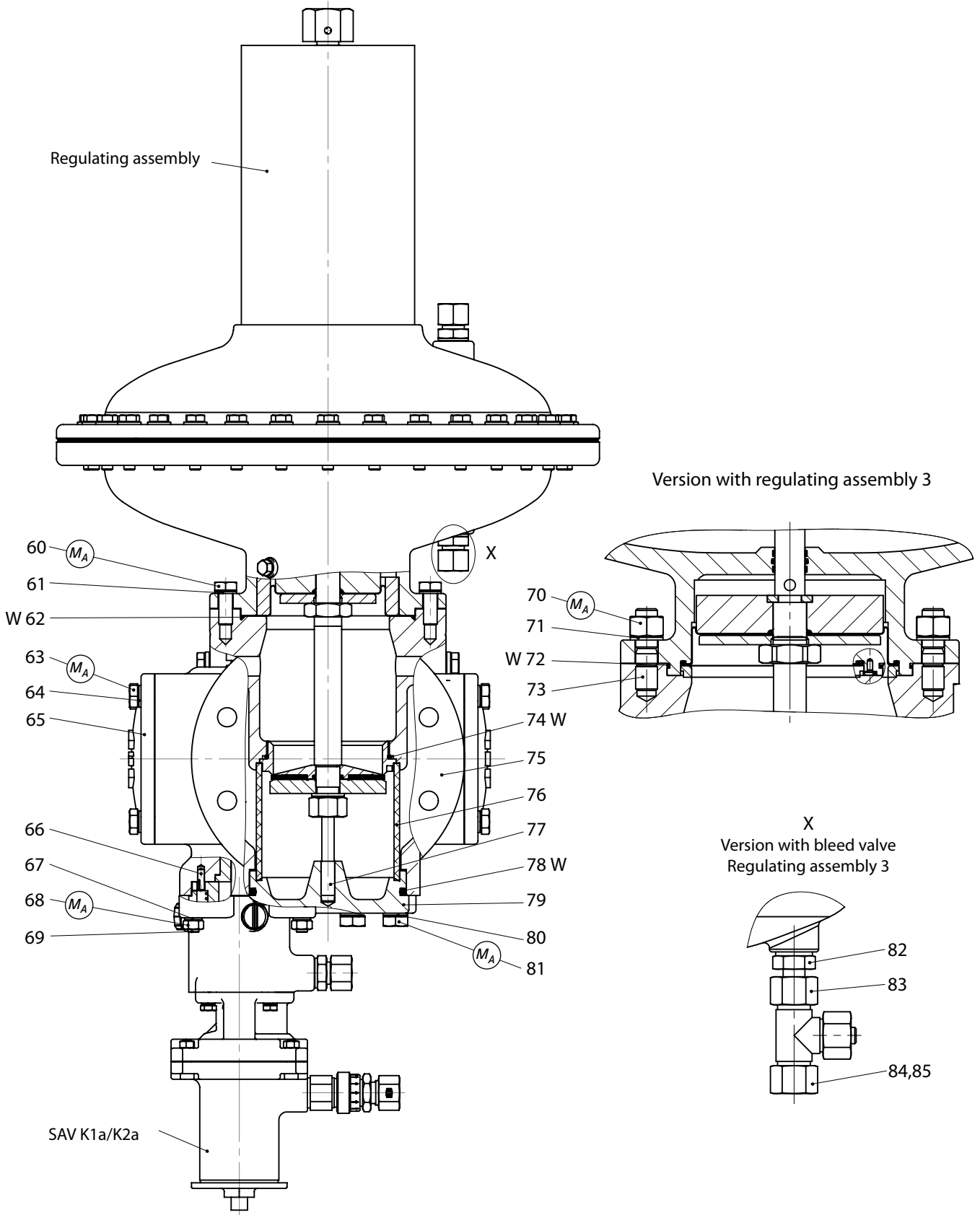
W Parts should be held in stock for maintenance purposes.

German abbreviations stand for the following materials:

St...	steel	LM ...	light metal / alloy	GMs ...	cast brass
NSt	... stainless steel	Ms ...	brass	GZn ...	cast zinc
FSt	... spring steel	GS ...	cast steel	ALBz ...	aluminium bronze
NFSt	... stainless spring steel	GGG ...	spheroidal graphite cast iron	K ...	synthetic materials
Bz	... bronze	GBz ...	cast bronze	KG ...	gumous synthetic materials
Cu	... copper	GLM ...	cast light metal	SSt ...	foamed materials

Item no.	Denomination	Number	W	Materials	Part no.	
					DN 25	DN 50
19	Metal foam ring	1		NSt	15025006	15026027
20	Pin	1		St	15026013	15026013
21	O ring	1	W	KG	00021271	00520001
21	Cover, optional:					
22	Cap	1		GGG	15055012	15056054
22	Cap			GS	15055013	15056055
22	Cap			GS	15055014	15056056
23	Lock washer	2		St	14121	14119
24	Hex screw	2		St	10630	510107
25	Dowel pin	2		St	17269	17269
26	Vent valve	1		St	10010570	10010570
27	Adapter	1		St	10030858	10030858
28	Sealing ring	1	W	LM	00518017	00518017
29	Sealing ring	1	W	LM	00518017	00518017
30	Screwed connection	1		St	530044	530044
31	Screwed connection	1		St	31213	31213
32	Bleed valve	1		St/Ms	10004060	10004060
33	Union nut	1		St	30804	30804
34	Cutting ring	1		St	30904	30904
35	Screw plug RE1,2,3	1		St	10633	10633
35	Screw plug RE0	1		St	10633	10633
36	Round ring RE1,2,3	1	W	KG	21250	21250
36	Round ring RE0		W	KG	21250	21250
37	Hex screw	4		St		10066
38	Lock washer	4		St		14122
39	Sealing ring	2	W	LM	518017	518017
40	Sealing cap	2		St	10633	10633

3.2.1 Spare parts drawings RMG 370 DN 80, DN 100 and DN 150
drawing shows DN 80 regulating assembly 2



M_A Be sure to comply with tightening torques in table on page 05.

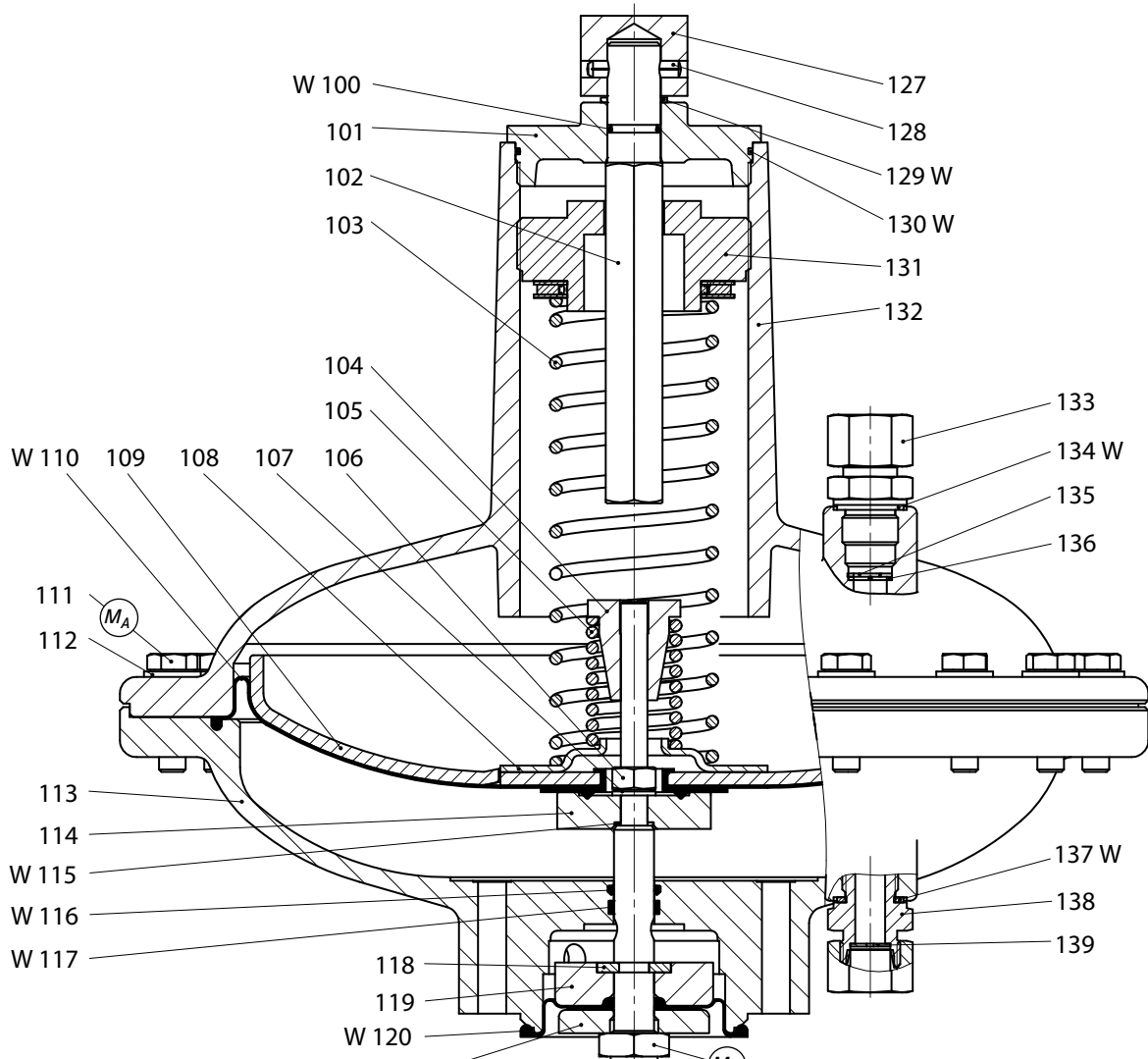
W Parts should be held in stock for maintenance purposes.

3.2.1 Spare parts lists RMG 370 DN 80, DN 100 and DN 150

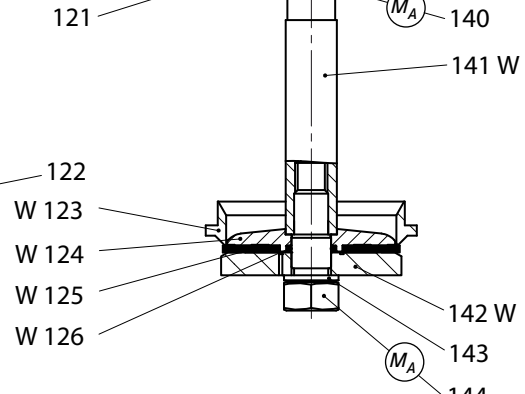
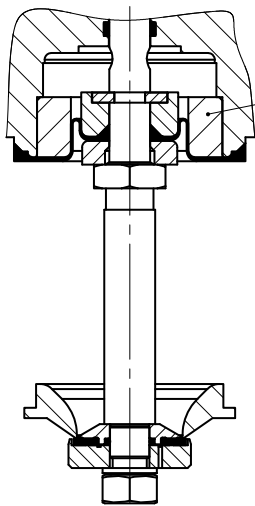
Item no.	Denomination	Number	W	Materials	Part no.		
					DN 80	DN 100	DN 150
60	Hex screw	4		St	10630	10630	
61	Lock washer	4		St	14121	14121	
62	O ring	1	W	KG	20428	20428	
63	Hex screw	8		St	10630	510001	510113
64	Lock washer	8		St	14121	14119	14116
65	SSV cover, optional:						
65	SSV cover	2		GGG	15057016	15058013	15059014
65	SSV cover	2		GS	15057017	15058014	15059015
65	SSV cover	2		GS	15057018	15058015	15059016
66	Dowel pin	2		St	17269	17269	17269
67	Lock washer	3		St	14122	14122	14122
68	Hex nut	3		St	5559	5559	5559
89	Locking screw	3		St	12473	12473	12473
70	Hex nut	4		St	5692	5692	13183
71	Lock washer	4		St	14121	14121	14116
72	O ring	1	W	KG	20428	20428	520106
73	Locking screw	4		St	12394	12394	510114
74	O ring	1	W	KG	21263	21266	520082
75	Body, optional:						
75	Body with SSV; PN16	1		GGG	15057101	15058101	15059001
75	Body with SSV; PN16	1		GS	15057103	15058103	15059005
75	Body with SSV; PN16	1		GS	15057105	15058105	15059009
75	Body with SSV; Class150	1		GGG	15057102	15058102	15059002
75	Body with SSV; Class150	1		GS	15057104	15058104	15059006
75	Body with SSV; Class150	1		GS	15057106	15058106	15059010
75	Body without SSV; PN16	1		GGG	15057151	15058151	15059003
75	Body without SSV; PN16	1		GS	15057153	15058153	15059007
75	Body without SSV; PN16	1		GS	15057155	15058155	15059011
75	Body without SSV; Class150	1		GGG	15057152	15058152	15059004
75	Body without SSV; Class150	1		GS	15057154	15058154	15059008
75	Body without SSV; Class150	1		GS	15057156	15058156	15059012
76	Metal foam ring	1		NSt	15027023	15028008	15059035
77	Pin	1		NSt	15057025	15057025	15059044
78	O ring	1	W	KG	21272	21267	520107
79	Cover, optional:						
79	Cap	1		GGG	15057020	15058017	15059018
79	Cap	1		GS	15057021	15059018	15059019
79	Cap	1		GS	15057022	15058019	15059020
80	Lock washer	3		St	14119	14119	14116
81	Hex screw	3		St	510001	510001	510113
82	Screwed connection	1		St	530046	530046	530046
83	Bleed valve	1		St/Ms	10008996	10008996	10008996
84	Union nut	1		St	30807	30807	30807
85	Cutting ring	1		St	30906	30906	30906

3.3.1 Spare parts drawing regulating assembly 1

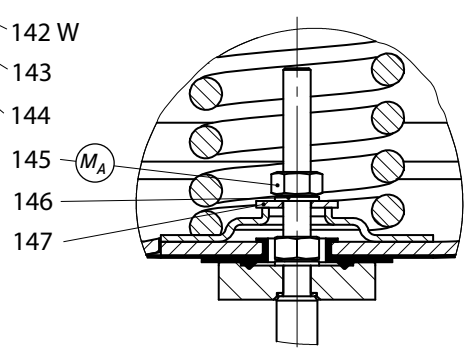
Version with SRV
 Outlet pressure range W_d 20 to 500 mbar



DN 25 valve seat \varnothing 25, \varnothing 31
 DN 50 valve seat \varnothing 31



Version with SRV blocked
 Outlet pressure range W_d 20 to 1,000 mbar



M_A Be sure to comply with tightening torques in table on page 05.
 W Parts should be held in stock for maintenance purposes.

3.3.2 Spare parts list regulating assembly 1

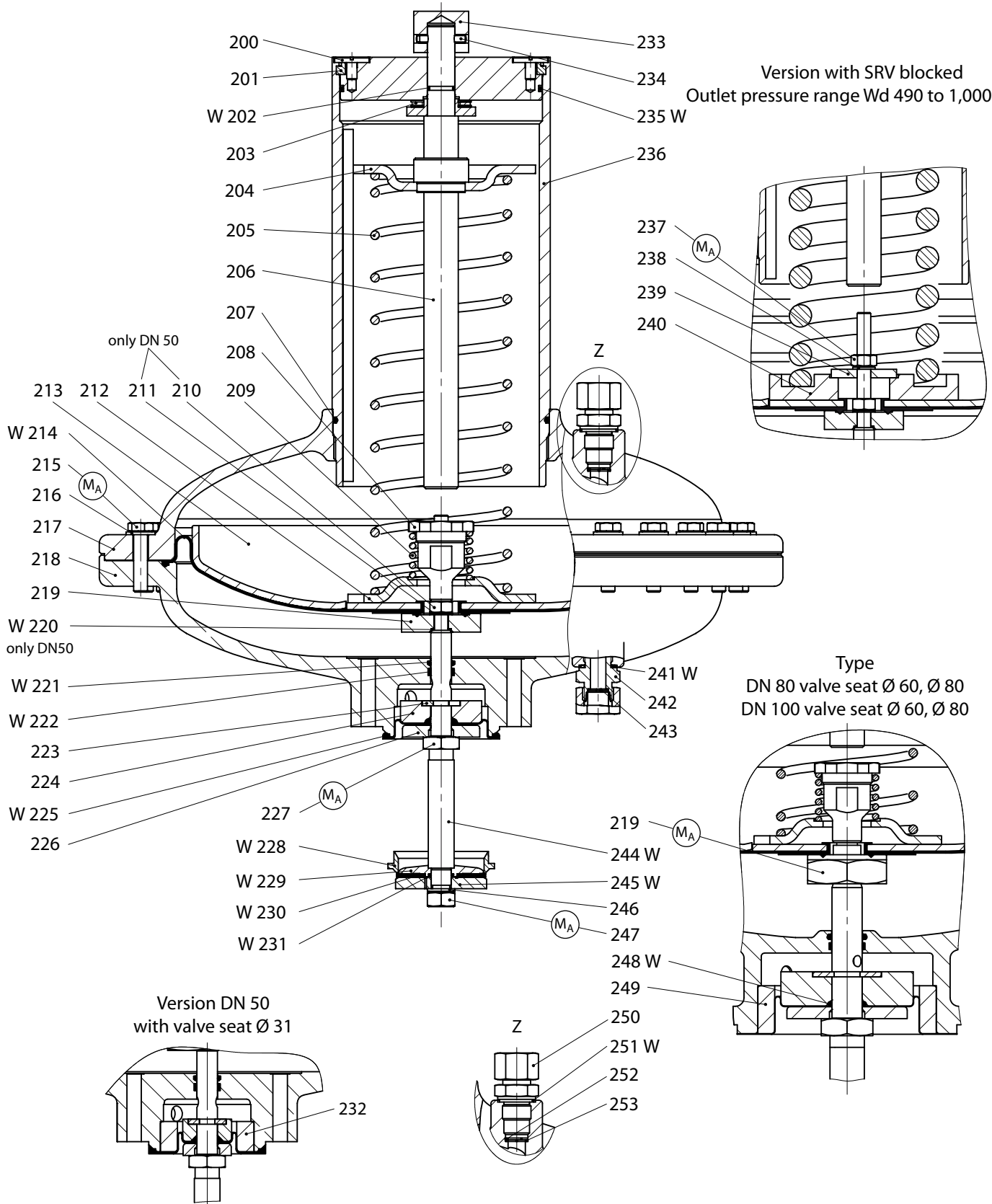
Item no.	Denomination	Number	W	Materials	Part no.	
					DN 25	DN 50
100	O ring	1	W	KG	20588	20588
101	Cover, spring housing	1		GLM	15056163	15056163
102	Hexagon shaft	1		St	15056162	15056162
103	Control spring, optional:					
103	Control spring Wds 20 to 30 bar	1		FSt	10007241	10007241
103	Control spring Wds 25 to 50 bar	1		FSt	10003629	10003629
103	Control spring Wds 45 to 75 bar	1		FSt	15055022	15055022
103	Control spring Wds 70 to 100 bar	1		FSt	10003630	10003630
103	Control spring Wds 90 to 160 bar	1		FSt	15055023	15055023
103	Control spring Wds 150 to 200 bar	1		FSt	10003631	10003631
103	Control spring Wds 190 to 260 bar	1		FSt	15055024	15055024
103	Control spring Wds 250 to 300 bar	1		FSt	10003632	10003632
103	Control spring Wds 290 to 360 bar	1		FSt	15055025	15055025
103	Control spring Wds 350 to 400 bar	1		FSt	10003633	10003633
103	Control spring Wds 390 to 500 bar	1		FSt	15055026	15055026
103	Control spring Wds 490 to 560 bar	1		FSt	15055027	15055027
103	Control spring Wds 550 to 660 bar	1		FSt	15055028	15055028
103	Control spring Wds 650 to 760 bar	1		FSt	15055029	15055029
103	Control spring Wds 750 to 800 bar	1		FSt	10012564	10012564
103	Control spring Wds 790 to 900 bar	1		FSt	15055030	15055030
103	Control spring Wds 890 to 1000 bar	1		FSt	15055031	15055031
104	Spring plate	1		LM	15026025	15026025
105	Pressure spring	1		FSt	10003636	10003636
106	Hex nut	1		St	5559	5559
107	Lock washer	1		St	14122	14122
108	Spring plate	1		St	15056016	15056016
109	Diaphragm disk	1		LM	15056006	15056006
110	Roll diaphragm	1	W	KG	15056001	15056001
111	Hex screw	20		St	510110	510110
112	Washer	20		St	8281	8281
113	Diaphragm housing UT	1		GLM	15056003	15056003
114	Check piece	1		LM	15056902	15056902
115	Sealing ring	1	W	LM	18710	18710
116	O ring	1	W	KG	21252	21252
117	Guide belt	1	W	KG	15056251	15056251
118	Ring segment ø25	2		Ms	15025018	
118	Ring segment ø31, ø50	2		St	10008612	10008612
119	Diaphragm plate, optional:					
119	Diaphragm plate Ø25	1		LM	15025015	
119	Diaphragm plate Ø31	1		LM	15026805	15026805
119	Diaphragm plate Ø50	1		LM		15026012
120	Diaphragm, optional:					
120	Diaphragm Ø25	1	W	KG	15025011	
120	Diaphragm Ø31	1	W	KG	15026801	15026801
120	Diaphragm Ø50	1	W	KG		15026002

Item no.	Denomination	Number	W	Materials	Part no.	
					DN 25	DN 50
121	Pressure disc, optional:					
121	Pressure disc Ø25	1		LM	15025014	
121	Pressure disc Ø31	1		LM	15026804	15026804
121	Pressure disc Ø50	1		LM		15026011
122	Reducer, optional:					
122	Reducer Ø25	1		LM	15055017	
122	Reducer Ø31	1		LM	15056803	15056803
123	Valve seat, optional:					
123	Valve seat Ø25	1	W	LM	15025012	
123	Valve seat Ø31	1	W	LM	15025003	15056802
123	Valve seat Ø50	1	W	LM		15056009
124	Pressurized section, optional:					
124	Pressurized section Ø25	1	W	LM	10006184	
124	Pressurized section Ø31	1	W	LM	10009199	10009199
124	Valve cone Ø50	1	W	LM		15056035
125	Sealing ring, optional:					
125	Sealing ring Ø25	1	W	KG	10006183	
125	Sealing ring Ø31	1	W	KG	10009215	10009215
125	Sealing ring Ø50	1	W	KG		10009217
126	O ring	1	W	KG	20451	20451
127	Hexagon adjusting ring	1		St	10009055	10009055
128	Dowel pin	1		St	17145	17145
129	Sealing ring	1	W	LM	18694	18694
130	O ring	1	W	KG	520102	520102
131	Setpoint adjusting screw, complete	1		St/Ms	15056120	15056120
132	Diaphragm housing OT	1		GLM	15056114	15056114
133	Screwed connection	1		St	530043	530043
134	Sealing ring	1	W	LM	518017	518017
135	Sealing ring	1		St	19133	19133
136	Slotted grid plate	1		KG	15056043	15056043
137	Sealing ring	1	W	LM	518017	518017
138	Screwed connection	1		St	530043	530043
139	Washer	1		LM	15026029	15026029
140	Hex nut	1		St	10009045	10009045
141	Valve stem, complete	1	W	Ms/NSt	15055300	15056300
142	Valve plate, at option:					
142	Valve plate Ø25	1	W	LM	10023463	
142	Valve plate Ø31	1	W	LM	10023464	10023464
142	Valve plate Ø50	1	W	LM		15026028
143	Lock washer	1		St	14133	14133
144	Hex nut	1		St	5692	5692
145	Hex nut	1		St	5559	5559
146	Lock washer	1		St	14122	14122
147	Washer	1		St	14157	14157

3.4.1 Spare parts drawing regulating assembly 2

Version with SRV
 Outlet pressure range Wd 20 to 500 mbar

Version with SRV blocked
 Outlet pressure range Wd 490 to 1,000 mbar



MA Be sure to comply with tightening torques in table on page 05.
 W Parts should be held in stock for maintenance purposes.

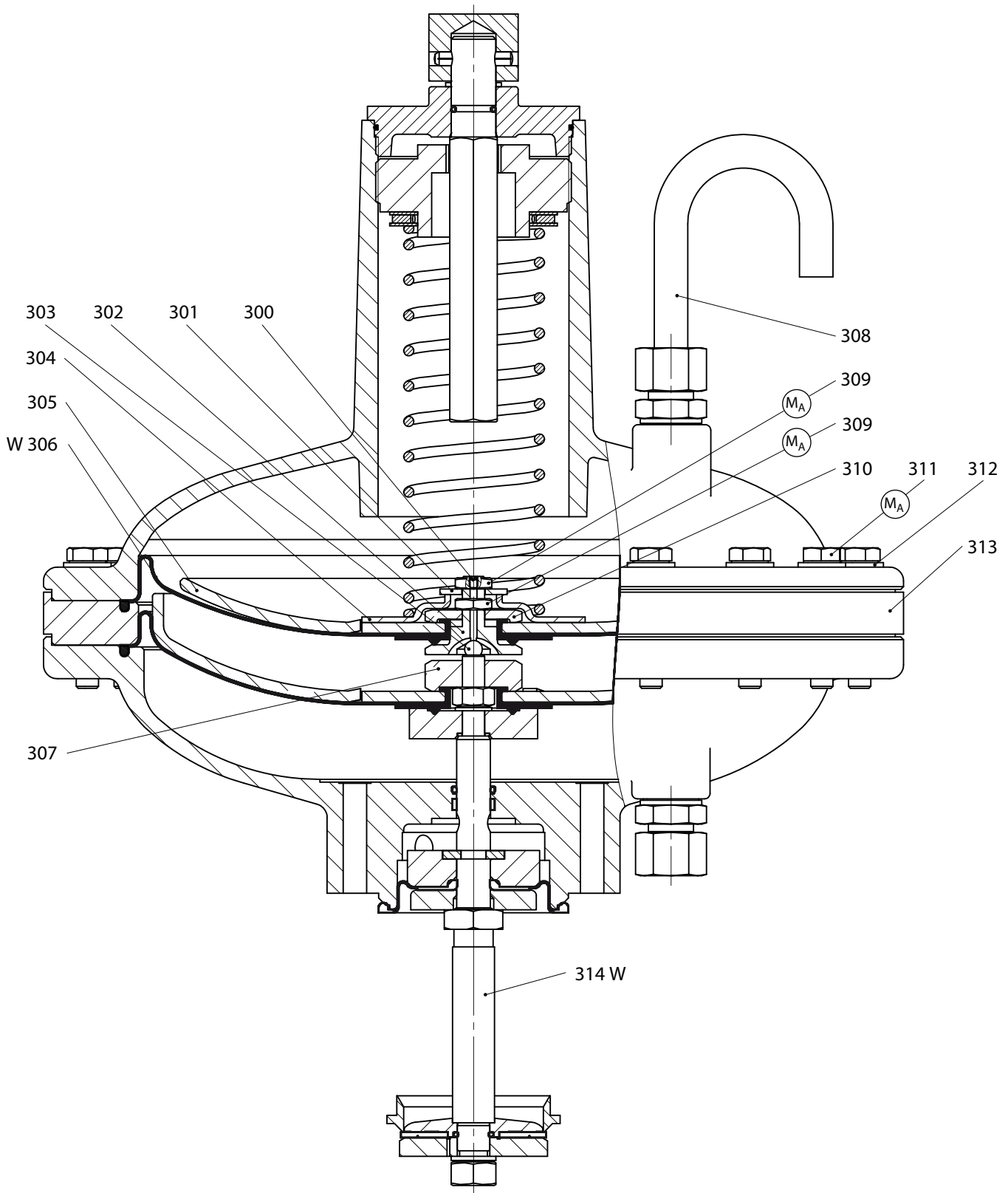
3.4.2 Spare parts list regulating assembly 2

Item no.	Denomination	No.	W	Materials	Part no.		
					DN 50	DN 80	DN 100
200	Flat head screw	2		St	11111	11111	11111
201	Half-ring	2		St	10009061	10009061	10009061
202	O ring	1	W	KG	20588	20588	20588
203	Axial needle bearing	1		St	26384	26384	26384
203	Axial disc	2		St	26385	26385	26385
204	Spring plate, cpl., optional:						
204	Spring plate Wds 20 to 500 mbar	1		St/Ms	10009067	10009067	10009067
204	Spring plate Wds 490 to 1000 mbar	1		Ms	10009167	10009167	10009167
205	Control spring, optional:						
205	Control spring Wds 20 to 30 bar	1		FSt	15056070	15056070	15056070
205	Control spring Wds 25 to 50 bar	1		FSt	10009068	10009068	10009068
205	Control spring Wds 45 to 75 bar	1		FSt	15056072	15056072	15056072
205	Control spring Wds 70 to 100 bar	1		FSt	10009069	10009069	10009069
205	Control spring Wds 90 to 160 bar	1		FSt	15056073	15056073	15056073
205	Control spring Wds 150 to 200 bar	1		FSt	10009070	10009070	10009070
205	Control spring Wds 190 to 260 bar	1		FSt	15056074	15056074	15056074
205	Control spring Wds 250 to 300 bar	1		FSt	15056075	15056075	15056075
205	Control spring Wds 290 to 360 bar	1		FSt	15056076	15056076	15056076
205	Control spring Wds 350 to 400 bar	1		FSt	10009072	10009072	10009072
205	Control spring Wds 390 to 500 bar	1		FSt	10009073	10009073	10009073
205	Control spring Wds 490 to 560 bar	1		FSt	15056077	15056077	15056077
205	Control spring Wds 550 to 660 bar	1		FSt	15056078	15056078	15056078
205	Control spring Wds 650 to 760 bar	1		FSt	15056079	15056079	15056079
205	Control spring Wds 750 to 800 bar	1		FSt	10009164	10009164	10009164
205	Control spring Wds 790 to 900 bar	1		FSt	15056081	15056081	15056081
205	Control spring Wds 890 to 1000 bar	1		FSt	15056082	15056082	15056082
206	Adjusting spindle, complete	1		St	10009048	10009048	10009048
207	O ring	1	W	KG	20428	20428	20428
208	Adjusting piece	1		LM	10009178	15027506	15027506
209	Control spring for SRV, optional:						
209	Control spring pd +15 mbar	1		FSt	10009151	10009151	10009151
209	Control spring pd +30 mbar	1		FSt	10009152	10009152	10009152
209	Control spring pd +60 mbar	1		FSt	10009153	10009153	10009153
210	Hex nut	1		St	5559		
211	Lock washer	1		St	14122		
212	Spring plate, optional:						
212	Spring plate Wds 20 to 500 mbar	1		St	18357835	18357835	18357835
212	Spring plate Wds 490 to 1000 mbar	1		St	15056065	15056065	15056065
213	Diaphragm disc	1		LM	15056040	15056040	15056040
214	Roll diaphragm	1	W	KG	15056039	15056039	15056039
215	Hex screw	32		St	510112	510112	510112

Item no.	Denomination	No.	W	Materials	Part no.		
					DN 50	DN 80	DN 100
216	Washer	32		St	8281	8281	8281
217	Diaphragm housing OT	1		GLM	15056036	15056036	15056036
218	Diaphragm housing UT	1		GLM	15056042	15057003	15057003
219	Check piece	1		LM	15056902	15057032	15057032
220	Sealing ring	1	W	LM	18710		
221	O ring	1	W	KG	21252	20607	20607
222	Guide belt	1	W	KG	15056251	15057251	15057251
223	Ring segment	2		St	10008612	10009129	10009129
224	Diaphragm plate, optional:						
224	Diaphragm plate ø 31	1		LM	15026805		
224	Diaphragm plate ø 50	1		LM	15026012		
224	Diaphragm plate ø 60	1		LM		15057042	15057042
224	Diaphragm plate ø 80	1		LM		15057041	15057041
224	Diaphragm plate Ø100	1		LM			15058027
225	Diaphragm, optional:						
225	Diaphragm Ø31	1	W	KG	15026801		
225	Diaphragm Ø50	1	W	KG	15026002		
225	Pressure-compensating diaphragm ø 60	1	W	KG		10009120	10009120
225	Pressure-compensating diaphragm ø 80	1	W	KG		10009134	10009134
225	Pressure-compensating diaphragm ø100	1	W	KG			10009137
226	Pressure disc, optional:						
226	Pressure disc ø 31	1		LM	15026804		
226	Pressure disc ø 50	1		LM	15026011		
226	Pressure disc ø 60	1		LM		10009124	10009124
226	Pressure disc ø 80	1		LM		10009125	10009125
226	Pressure disc Ø100	1		LM			10009128
227	Hex nut	1		St	10009045	10009109	10009109
228	Valve seat, optional:						
228	Valve seat ø 31	1	W	LM	15056802		
228	Valve seat ø 50	1	W	LM	15056009		
228	Valve seat ø 60	1	W	LM		15027003	15028004
228	Valve seat ø 80	1	W	LM		15027002	15028005
228	Valve seat Ø100	1	W	LM			15058026
229	Pressurized section (valve cone), optional:						
229	Pressurized section ø 31	1	W	LM	10009199		
229	Valve cone ø 50	1	W	LM	15056035		
229	Pressurized section ø 60	1	W	LM		10009208	10009208
229	Pressurized section ø 80	1	W	LM		10009207	10009207
229	Pressurized section Ø100	1	W	LM			10009206

Item no.	Denomination	No.	W	Materials	Part no.		
					DN 50	DN 80	DN 100
230	Sealing ring, optional:						
230	Sealing ring ø 31	1	W	KG	10009215		
230	Sealing ring ø 50	1	W	KG	10009217		
230	Sealing ring ø 60	1	W	KG		10009218	10009218
230	Sealing ring ø 80	1	W	KG		10009219	10009219
230	Sealing ring ø100	1	W	KG			10009220
231	O ring	1	W	KG	20451	20442	20442
232	Reducer ø31	1		LM	15056803		
233	Hexagon adjusting ring	1		St	10009055	10009055	10009055
234	Dowel pin	1		St	17145	17145	17145
235	O ring	1	W	KG	20248	20248	20248
236	Suspended spring dome, complete	1		St	15056041	15056041	15056041
237	Hex nut	1		St	5559	13120	13120
238	Lock washer	1		St	14122	14119	14119
239	Washer	1		St	15026914	15027513	15027513
240	Spring plate W _{ds} 490 to 1000 mbar	1		St	15056065	15056065	15056065
241	Sealing ring	1	W	LM	518017	518017	518017
242	Screwed connection	1		St	530043	530043	530043
243	Washer	1		LM	15026029	15026029	15026029
244	Valve rod	1	W	Ms/NSt	15056300	15057200	15057200
245	Valve plate, at option:						
245	Valve disc ø 31	1	W	LM	10023464		
245	Valve disc ø 50	1	W	LM	15026028		
245	Valve disc ø 60	1	W	LM		15027020	15027020
245	Valve disc ø 80	1	W	LM		15027009	15027009
245	Valve plate Ø100	1	W	LM			15028009
246	Lock washer	1		St	14113	14116	14116
247	Hex screw	1		St	5692	13203	13203
248	O ring	1	W	KG		20442	20442
249	Reducer, optional:						
249	Reducer ø60	1		LM		15057803	15057803
249	Reducer ø80	1		LM		15057802	15057802
250	Screwed connection	1		St	530043	530043	530043
251	Sealing ring	1	W	LM	518017	518017	518017
252	Sealing ring	1		St	19133	19133	19133
253	Slotted grid plate	1		KG	15056043	15056043	15056043

3.5.1.1 Spare parts drawing regulating assembly 1 with safety diaphragm

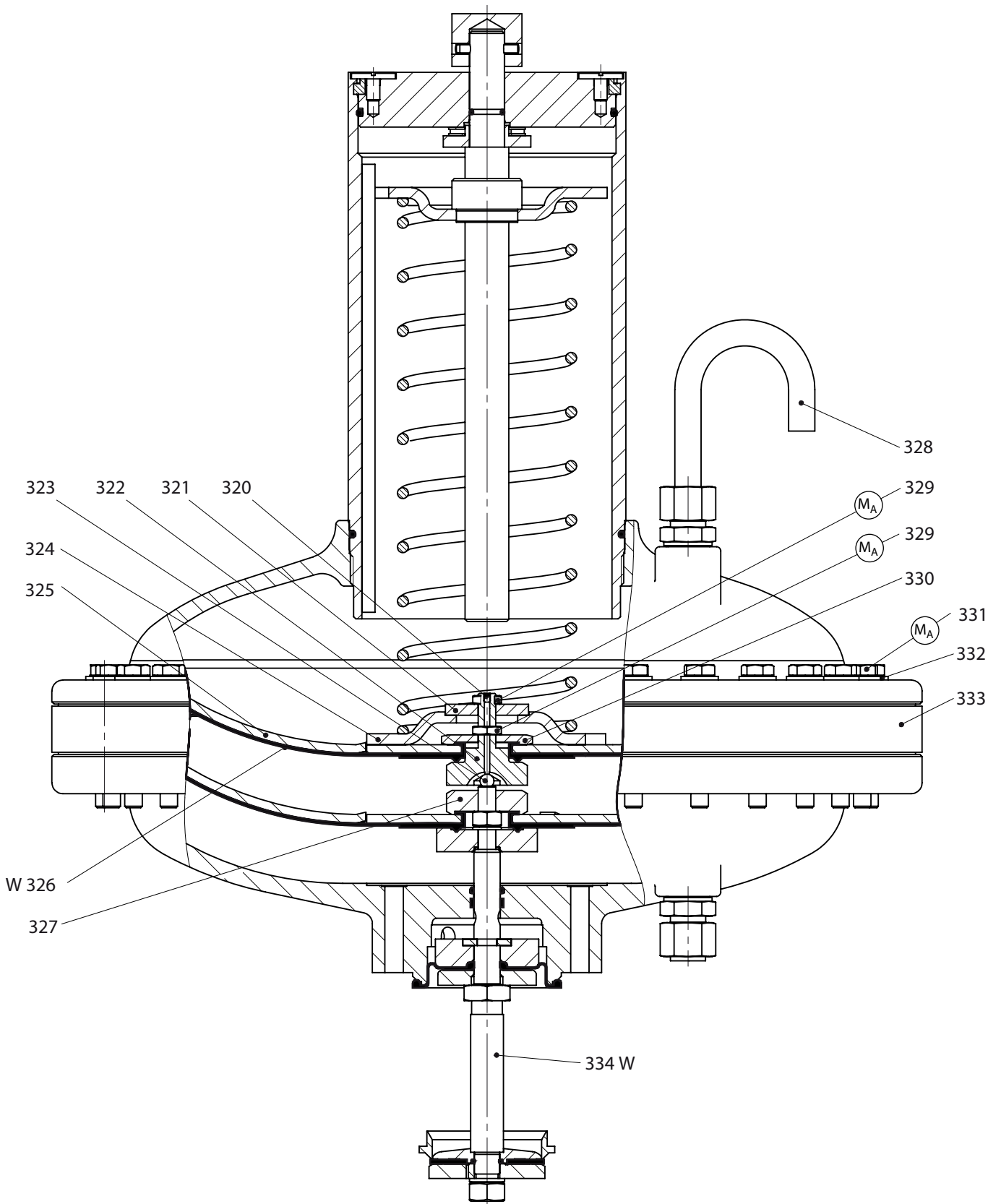


M_A Be sure to comply with tightening torques in table on page 05.

W Parts should be held in stock for maintenance purposes.

For parts without item # please see regulating assembly 1.

3.4.1. Spare parts drawing regulating assembly 2 with safety diaphragm



M_A Be sure to comply with tightening torques in table on page 05.

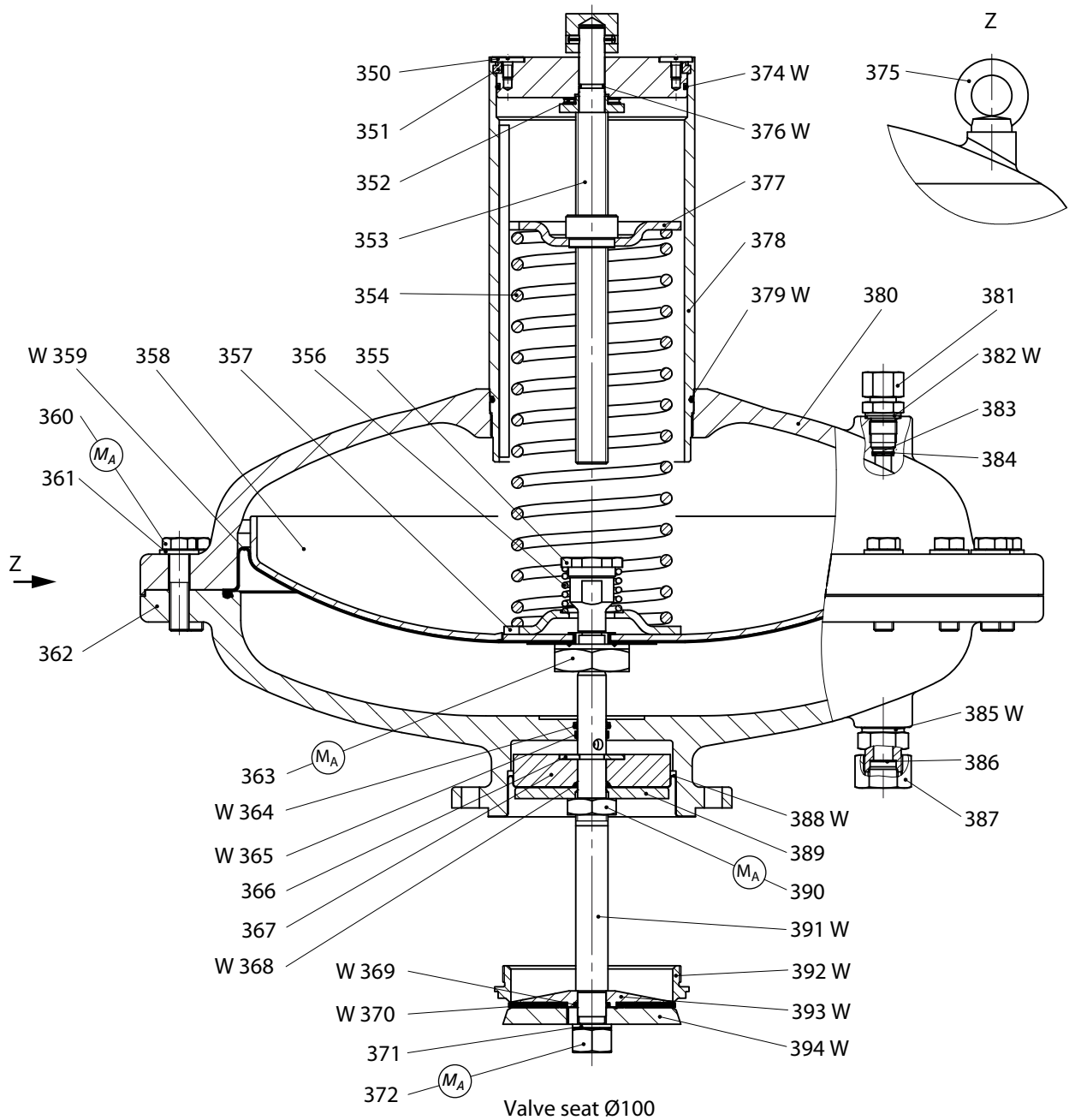
W Parts should be held in stock for maintenance purposes.

For parts without item # please see regulating assembly 2.

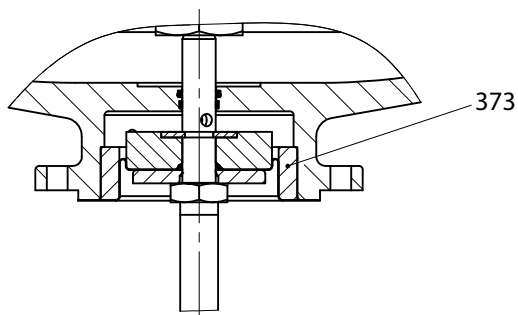
3.5.2 Spare parts lists regulating assemblies 1 and 2 with safety diaphragms

Item no.	Denomination	Number	W	Materials	Part no.			
					DN 25	DN 50	DN 80	DN 100
300	Threaded pin (setscrew)	1		St	12405	12405		
301	Washer	1		St	14157	14157		
302	Locking screw	1		NSt	10006177	10006177		
303	Sphere	1		NSt	3055	3055		
304	Spring plate	1		St	15056016	15056016		
305	Diaphragm disc, reworked	1		LM	15056604	15056604		
306	Safety diaphragm	1	W	KG	15056603	15056603		
307	Distance piece	1		NSt	15056601	15056601		
308	Pipe bend	1		St	10006254	10006254		
309	Hex nut	2		St	13115	13115		
310	Distance piece	1		LM	10006178	10006178		
311	Hex screw	20		St	510111	510111		
312	Washer	20		St	8281	8281		
313	Ring SM	1		LM	15056602	15056602		
314	Valve stem, complete	1	W	Ms/NSt	15055620	15056620		
320	Threaded pin (setscrew)					12405	12405	12405
321	Washer	1		St		15026914	15026914	15026914
322	Locking screw	1		NSt		15056915	15056915	15056915
323	Sphere	1		St		3055	3055	3055
324	Spring plate	1		St		18357835	18357835	18357835
325	Diaphragm disc, reworked	1		LM		15056914	15056914	15056914
326	Safety diaphragm	1	W	KG		15056913	15056913	15056913
327	Distance piece			NSt		15056911	15056911	15056911
328	Pipe bend	1		St		10006254	10006254	10006254
329	Hex nut	2		St		13115	13115	13115
330	Distance piece	1		LM		15027155	15027155	15027155
331	Hex screw	32		St		10043	10043	10043
332	Washer	32		St		8281	8281	8281
333	Ring SM	1		LM		15056912	15056912	15056912
334	Valve stem, complete	1	W	Ms/NSt		15056620	15057620	15058620

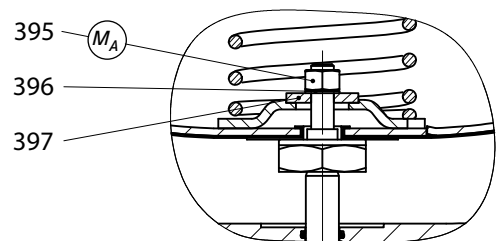
3.6.1.1 Spare parts drawing regulating assembly 3 for DN 80 and DN 100



Valve seats - Ø 60 and Ø 80



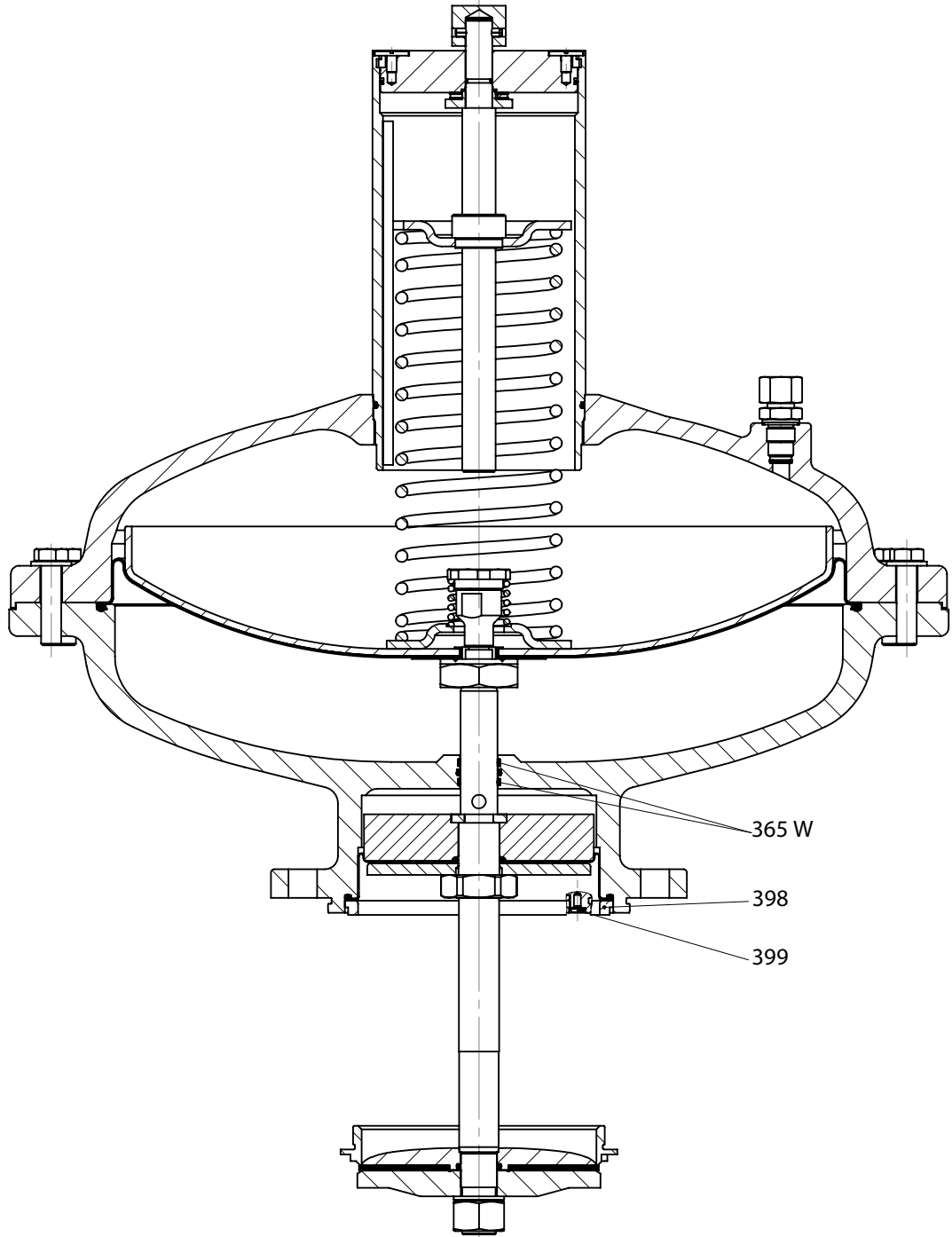
Version SRV blocked



MA Be sure to comply with tightening torques in table on page 05.

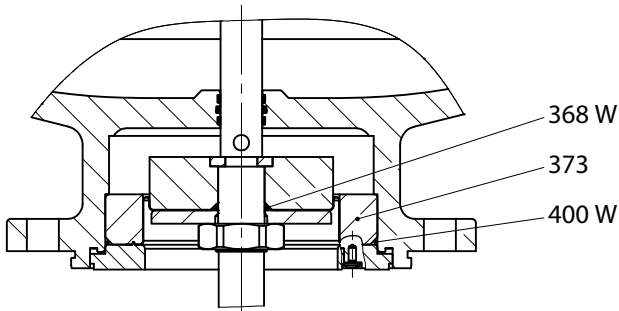
W Parts should be held in stock for maintenance purposes.

3.6.1.2 Spare parts drawing regulating assembly 3 for DN 150



Valve seat - Ø 100

Valve seat - Ø 140



M_A Be sure to comply with tightening torques in table on page 05.
 W Parts should be held in stock for maintenance purposes.

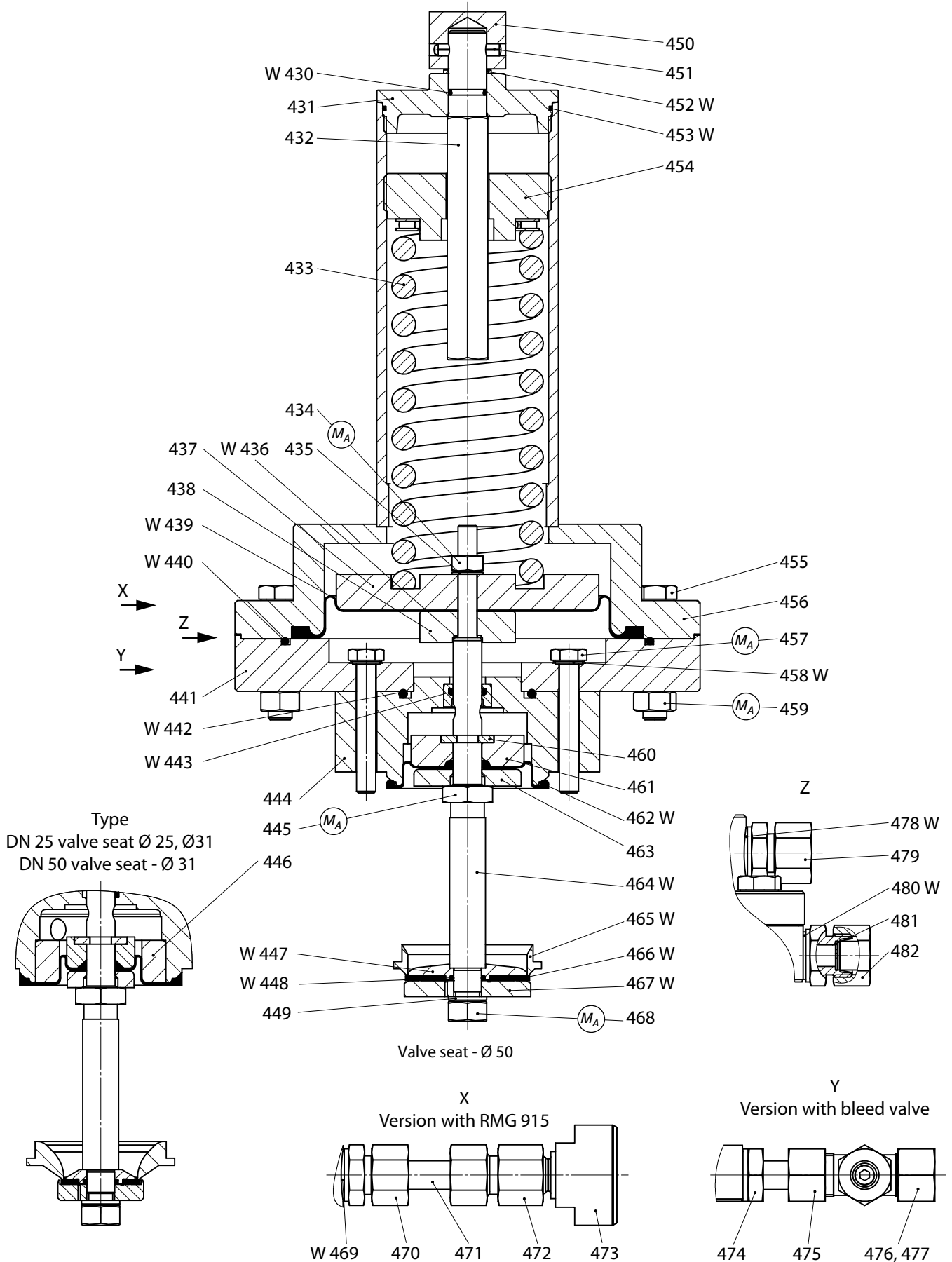
3.6.2 Spare parts list regulating assembly 3

Item no.	Denomination	Number	W	Materials	Part no.		
					DN 80	DN 100	DN 150
350	Flat head screw	2		St	11111	11111	11111
351	Half-ring	2		St	10009061	10009061	10009061
352	Axial needle bearing	1		St	26384	26384	26384
352	Axial disc	2		St	26385	26385	26385
353	Adjusting spindle, complete	1		St	10009048	10009048	10009048
354	Control spring, optional:						
354	Control spring W _{ds} 20 - 30 mbar	1		FSt	15056083	15056083	15056083
354	Control spring W _{ds} 25 - 50 mbar	1		FSt	15056084	15056084	15056084
354	Control spring W _{ds} 45 - 75 mbar	1		FSt	15056085	15056085	15056085
354	Control spring W _{ds} 70 - 100 mbar	1		FSt	15056086	15056086	15056086
354	Control spring W _{ds} 90 - 160 mbar	1		FSt	15056087	15056087	15056087
354	Control spring W _{ds} 150 - 250 mbar	1		FSt	15056088	15056088	15056088
355	Adjusting piece	1		LM	15027506	15027506	15027506
356	Control spring for SRV, optional:						
356	Control spring pd +15 mbar	1		FSt	10009152	10009152	10009152
356	Control spring pd +30 mbar	1		FSt	10009153	10009153	10009153
357	Spring plate	1		St	18357835	18357835	18357835
358	Diaphragm disc	1		LM	15058022	15058022	15058022
359	Roll diaphragm	1	W	KG	15058021	15058021	15058021
360	Hex screw	24		St	8182	8182	8182
361	Washer	24		St	8271	8271	8271
362	Diaphragm housing UT	1		GLM	15058023	15058023	15059023
363	Check piece	1		LM	15057032	15057032	15057032
364	O ring	1	W	KG	20607	20607	20619
365	Guide belt	1	W	KG	15057251	15057251	
365	Guide belt	2	W	KG			15059251
366	Ring segment	2		St	10009129	10009129	15059046
367	Diaphragm plate, optional:						
367	Diaphragm plate ø 60	1		LM	15057042	15057042	
367	Diaphragm plate ø 80	1		LM	15057041	15057041	
367	Diaphragm plate Ø 100	1		LM		15058027	15059051
367	Diaphragm plate ø 140	1		LM			15059036
368	O ring	1	W	KG	20442	20442	20327
369	O ring	1	W	KG	20442	20442	20323
370	Sealing ring, optional:						
370	Sealing ring ø 60	1	W	KG	10009218	10009218	
370	Sealing ring ø 80	1	W	KG	10009219	10009219	
370	Sealing ring ø 100	1	W	KG		10009220	15059054
370	Sealing ring ø 140	1	W	KG			15801762
371	Lock washer	1		St	14116	14116	519022
372	Hex nut	1		St	3203	13203	513018
373	Reducer, optional:						
373	Reducer ø 60	1		LM	15057803	15057803	
373	Reducer ø 80	1		LM	15057802	15057802	
373	Reducer ø 100	1		LM			15059053
374	O ring	1	W	KG	20248	20248	20248
375	Eye bolt	2		St	10487	10487	10487

3.6.2 Spare parts list regulating assembly 3

Item no.	Denomination	Number	W	Materials	Part no.		
					DN 80	DN 100	DN 150
376	O ring	1	W	KG	20588	20588	20588
377	Spring plate, complete	1		St/Ms	10009067	10009067	10009067
378	Suspended spring dome, complete	1		St	15056041	15056041	15056041
379	O ring	1	W	KG	20428	20428	20428
380	Diaphragm housing OT	1		GLM	15058024	15058024	15058024
381	Screwed connection	1		St	530043	530043	530043
382	Sealing ring	1	W	LM	518017	518017	518017
383	Sealing ring	1		St	19133	19133	19133
384	Slotted grid plate	1		KG	15056043	15056043	15056043
385	Sealing ring	1	W	LM	18684	18684	18684
386	Washer	1		LM	15027027	15027027	15027027
387	Screwed connection	1		St	530045	530045	530045
388	Pressure-compensating diaphragm, optional:						
388	Pressure-compensating diaphragm ø 60	1	W	KG	10009120	10009120	
388	Pressure-compensating diaphragm ø 80	1	W	KG	10009134	10009134	
388	Pressure-compensating diaphragm ø 100	1	W	KG		10009137	15059057
388	Pressure-compensating diaphragm ø 140	1	W	KG			15059024
389	Pressure disc, optional:						
389	Pressure disc Ø 60	1		LM	10009124	10009124	
389	Pressure disc Ø 80	1		LM	10009125	10009125	
389	Pressure disc Ø 100	1		LM		10009128	15059052
389	Pressure disc Ø 140	1		LM			15059037
390	Hex nut	1		St	10009109	10009109	00513017
391	Valve stem, complete	1	W	Ms/NSt	15057200	15057200	15801756
392	Valve seat Ø 60	1	W	LM	15027003	15028004	
392	Valve seat Ø 80	1	W	LM	15027002	15028005	
392	Valve seat Ø 100	1	W	LM		15058026	15059048
392	Valve seat Ø 140	1	W	LM			15801759
393	Pressurized section, optional:						
393	Pressurized section ø 60	1	W	LM	10009208	10009208	
393	Pressurized section ø 80	1	W	LM	10009207	10009207	
393	Pressurized section Ø 100	1	W	LM		10009206	15059050
393	Valve cone ø 140						15801757
394	Valve plate, at option:						
394	Valve plate Ø 60	1	W	LM	15027020	15027020	
394	Valve plate Ø 80	1	W	LM	15027009	15027009	
394	Valve plate Ø 100	1	W	LM		15028009	15059049
394	Valve plate ø 140	1	W	LM			15059041
395	Hex nut	1		St	13120	13120	13120
396	Safety washer	1		St	14119	14119	14119
397	Washer	1		St	15027513	15027513	15027513
398	Pressure ring ø100	1		LM			15059055
	Pressure ring Ø140	1		LM			15059038
399	Flat head screw	2		St			510116
400	O ring	1	W	KG			21267

3.7.1 Spare parts drawing regulating assembly 0 for DN 25 and DN 50



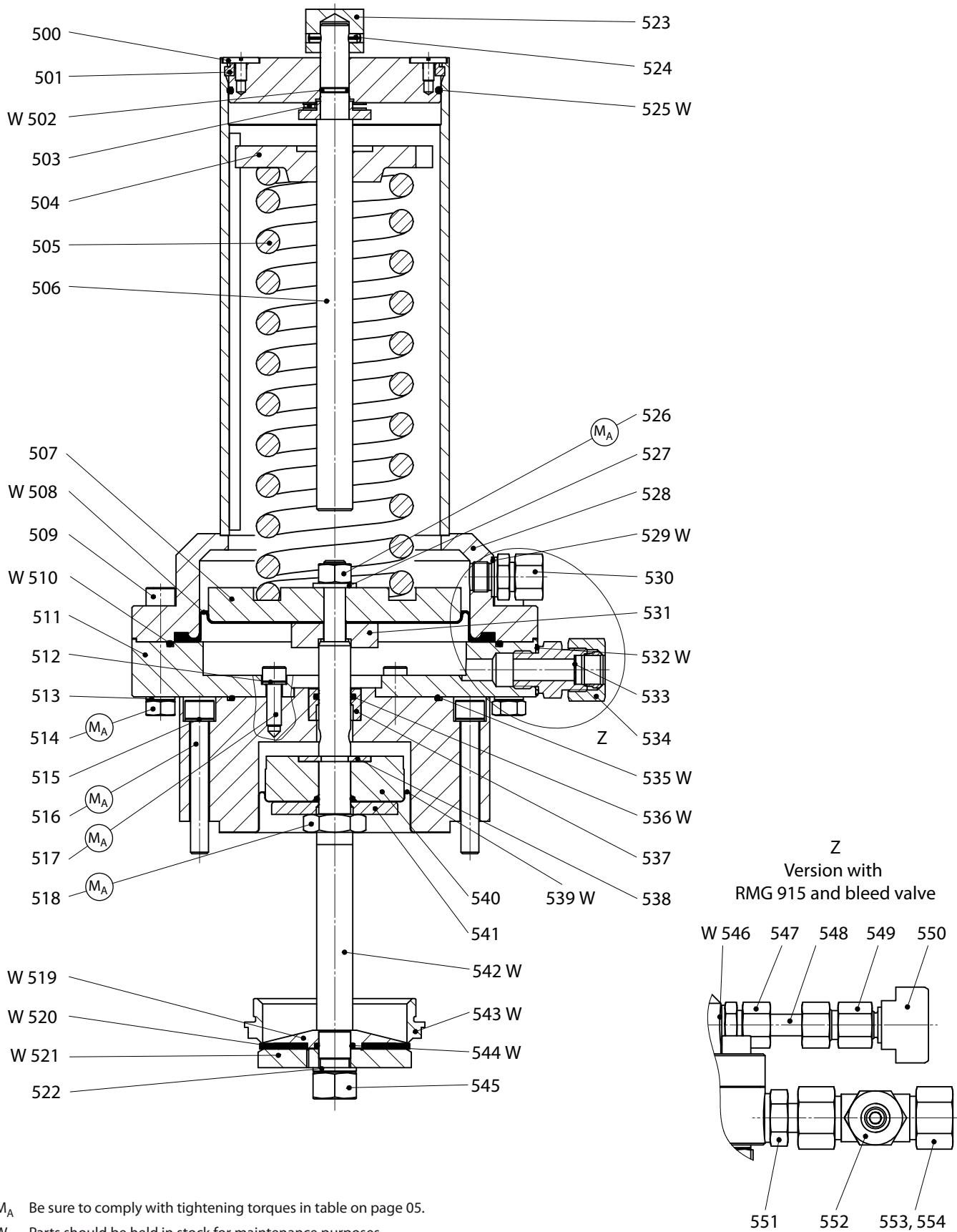
M_A Be sure to comply with tightening torques in table on page 05.

W Parts should be held in stock for maintenance purposes.

Item no.	Denomination	Number	W	Materials	Part no.	
					DN 25	DN 50
430	O ring	1	W	KG	20588	20588
431	Cover, spring housing	1		LM	15056163	15056163
432	Hexagon shaft	1		St	15056162	15056162
433	Control spring, optional:					
433	Control spring W _{ds} 1.0 bar to 2.5 bar	1		FSt	10012563	10012563
433	Control spring W _{ds} 2.0 bar to 4.0 bar	1		FSt	15026106	15026106
434	Hex nut	1		St	5559	5559
435	Lock washer	1		St	14122	14122
436	Sealing ring	1	W	LM	18710	18710
437	Diaphragm disc	1		LM	15056702	15056702
438	Check piece	1		LM	15025701	15026703
439	Roll diaphragm	1	W	KG	15026705	15026705
440	O ring	1	W	KG	520082	520082
441	Base	1		St	15056701	15056701
442	O ring	1	W	KG	20325	20325
443	O ring	1	W	KG	21252	21252
444	Distance piece with bush	1		LM/NSt	15056920	15056920
445	Hex nut	1		St	10009045	10009045
446	Reducer, optional:					
446	Reducer for valve seat ø 25	1		LM	15025013	
446	Reducer for valve seat ø 31	1		LM	15026803	15026803
447	Pressurized section, optional:					
447	Pressurized section for valve seat ø 25	1	W	LM	10006184	
447	Pressurized section for valve seat ø 31	1	W	LM	10009199	10009199
447	Valve cone for valve seat ø50	1	W	LM		15056035
448	O ring	1	W	KG	20451	20451
449	Lock washer	1		St	14133	14133
450	Hexagon adjusting ring	1		St	10009055	10009055
451	Dowel pin	1		St	17145	17145
452	Sealing ring	1	W	LM	18694	18694
453	O ring	1	W	KG	520102	520102
454	Setpoint adjusting screw, complete	1		St/Ms	10004875	10004875
455	Hex screw	8		St	510119	510119
456	Diaphragm cap	1		St	15056710	15056710
457	Hex screw	4		St	10398	10398
458	Sealing ring	4	W	LM	18710	18710
459	Hex nut	8		St	5692	5692
460	Ring segment, optional:					
460	Ring segment for valve seat ø 25	2		Ms	15025018	
460	Ring segment for valve seats ø 31, ø 50	2		St	10008612	10008612

Item no.	Denomination	Number	W	Materials	Part no.	
					DN 25	DN 50
461	Diaphragm plate, optional:					
461	Diaphragm plate for valve seat ø 25	1		LM	15025015	
461	Diaphragm plate for valve seat ø 31	1		LM	15026805	15026805
461	Diaphragm plate for valve seat ø 50	1		LM		15026012
462	Diaphragm, optional:					
462	Diaphragm for valve seat ø 25	1	W	KG	15025011	
462	Diaphragm for valve seat ø 31	1	W	KG	15026801	15026801
462	Diaphragm for valve seat ø 50	1	W	KG		15026002
463	Pressure disc, optional:					
463	Pressure disc for valve seat ø 25	1		LM	15025014	
463	Pressure disc for valve seat ø 31	1		LM	15026804	15026804
463	Pressure disc for valve seat ø 50	1		LM		15026011
464	Valve stem, complete	1	W	Ms/NSt	15055300	15056300
465	Valve seat, optional:					
465	Valve seat Ø 25	1	W	LM	15025012	
465	Valve seat Ø 31	1	W	LM	15025003	15056802
465	Valve seat Ø 50	1	W	LM		15056009
466	Sealing ring, optional:					
466	Sealing ring for valve seat ø 25	1	W	KG	10006183	
466	Sealing ring for valve seat ø 31	1	W	KG	10009215	10009215
466	Sealing ring for valve seat ø 50	1	W	KG		10009217
467	Valve plate, at option:					
467	Valve plate for valve seat ø 25	1	W	LM	10023463	
467	Valve plate for valve seat ø 31	1	W	LM	10023464	10023464
467	Valve plate for valve seat ø 50	1	W	LM		15026028
468	Hex nut	1		St	5692	5692
469	Sealing ring	1	W	LM	518017	518017
470	Screwed connection	1		St	530043	530043
471	Pipe	1		St	35507	35507
472	Screwed connection	1		St	530041	530041
473	Vent valve	1		St	10010570	10010570
474	Screwed connection	1		St	530044	530044
475	Bleed valve	1		St/Ms	10004060	10004060
476	Union nut	1		St	30804	30804
477	Cutting ring	1		St	30904	30904
478	Sealing ring	1	W	LM	518017	518017
479	Screwed connection	1		St	530043	530043
480	Sealing ring	1	W	LM	518017	518017
481	Washer	1		LM	15026029	15026029
482	Screwed connection	1		St	530043	530043

3.8.1 Spare parts drawing regulating assembly 0 for DN 80 with valve seats $\varnothing 60$ and $\varnothing 80$

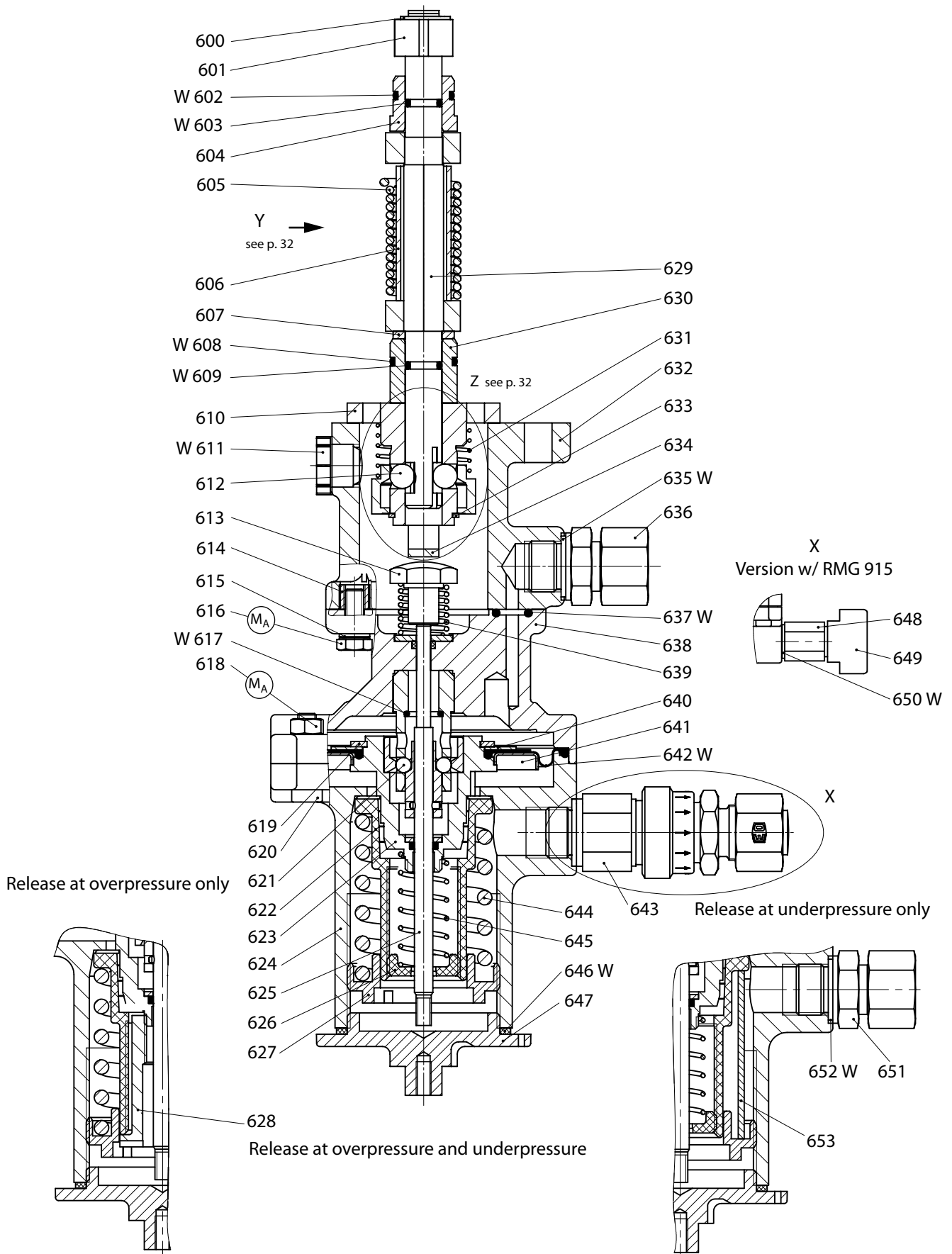


3.8.2 Spare parts list regulating assembly 0 for DN 80

Item no.	Denomination	Number	W	Materials	Part no. DN 80
500	Flat head screw	2		St	11111
501	Half-ring	2		St	10009061
502	O ring	1	W	KG	20588
503	Axial needle bearing	1		St	26384
503	Axial disc	2		St	26385
504	Spring plate	1		St/MS	10009167
505	Control spring, optional:				
505	Control spring W_{dS} 1.0 bar to 2.5 bar	1		FSt	10009163
505	Control spring W_{dS} 2.0 bar to 4.0 bar	1		FSt	10009164
506	Adjusting spindle, complete	1		St	10009048
507	Diaphragm disk	1		LM	15039102
508	Roll diaphragm	1	W	KG	15039104
509	Cheese head screw	12		St	510011
510	O ring	1	W	KG	520081
511	Base	1		St	15057112
512	Lock washer	4		St	14112
513	Lock washer	12		St	14113
514	Hex nut	12		St	5692
515	Lock washer	4		St	14121
516	Cheese head screw	4		St	10610
517	Cheese head screw	4		St	10323
518	Hex nut	1		St	10009109
519	Pressurized section, optional:				
519	Pressurized section for valve seat \varnothing 60	1	W	LM	10009208
519	Pressurized section for valve seat \varnothing 80	1	W	LM	10009207
520	Sealing ring, optional:				
520	Sealing ring for valve seat \varnothing 60	1	W	KG	10009218
520	Sealing ring for valve seat \varnothing 80	1	W	KG	10009219
521	Valve plate, at option:				
521	Valve plate for valve seat \varnothing 60	1	W	LM	15027020
521	Valve plate for valve seat \varnothing 80	1	W	LM	15027009
522	Lock washer	1		St	14116
523	Hexagon adjusting ring	1		St	10009055
524	Dowel pin	1		St	17145
525	O ring	1	W	KG	20248
526	Hex nut	1		St	13120
527	Washer	1		St	8271
528	Diaphragm cap	1		St	15057110
529	Sealing ring	1	W	LM	518017
530	Screwed connection	1		St	530043

Item no.	Denomination	Number	W	Materials	Part no. DN 80
531	Check piece	1		LM	15039103
532	Sealing ring	1	W	LM	18684
533	Washer	1		LM	15027027
534	Screwed connection	1		St	530045
535	O ring	1	W	KG	20335
536	O ring	1	W	KG	20607
537	Bushing	1		St	15027012
538	Ring segment	2		St	10009129
539	Pressure-compensating diaphragm, optional:				
539	Pressure-compensating diaphragm for valve seat \varnothing 60	1	W	KG	10009120
539	Pressure-compensating diaphragm for valve seat \varnothing 80	1	W	KG	10009134
540	Diaphragm plate, optional:				
540	Diaphragm plate for valve seat \varnothing 60	1		LM	10009142
540	Diaphragm plate for valve seat \varnothing 80	1		LM	10009141
541	Pressure disc, optional:				
541	Pressure disc for valve seat \varnothing 60	1		LM	10009124
541	Pressure disc for valve seat \varnothing 80	1		LM	10009125
542	Valve stem, complete	1	W	Ms/NSt	15027704
543	Valve seat, optional:				
543	Valve seat \varnothing 60	1	W	LM	15027003
543	Valve seat \varnothing 80	1	W	LM	15027002
544	O ring	1	W	KG	20442
545	Hex nut	1		St	13203
546	Sealing ring	1	W	LM	518017
547	Screwed connection	1		St	530043
548	Pipe	1		St	35507
549	Screwed connection	1		St	530041
550	Vent valve	1		St	10010570
551	Screwed connection	1		St	530046
552	Bleed valve	1		St/Ms	10008996
553	Union nut	1		St	30807
554	Cutting ring	1		St	30906

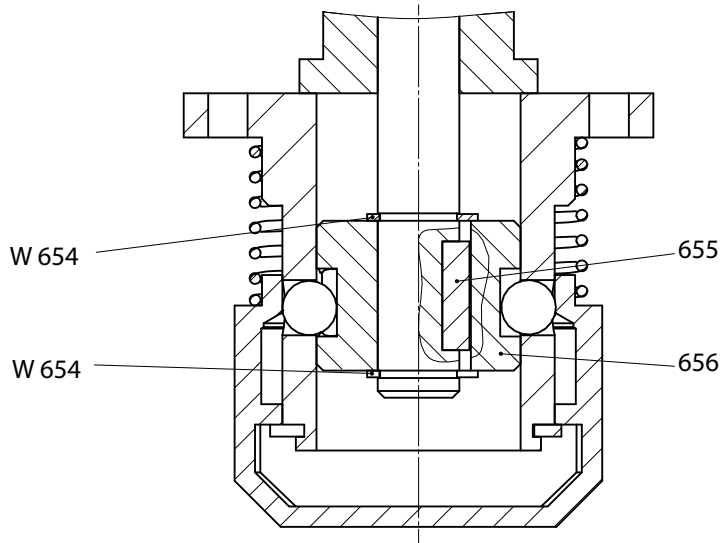
3.9.1.1 Spare parts drawing actuator K1a
 drawings show DN 25 and DN 50



MA Be sure to comply with tightening torques in table on page 05.

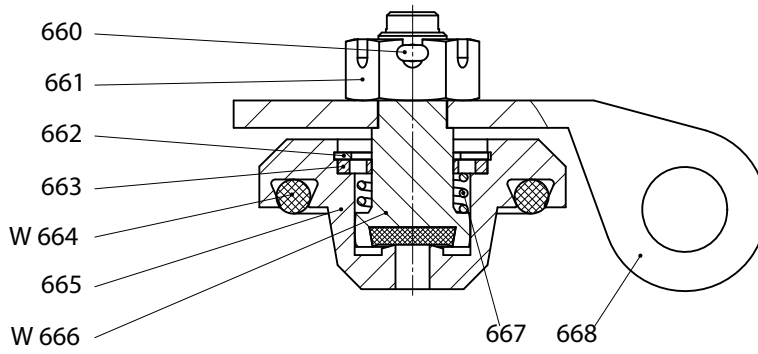
W Parts should be held in stock for maintenance purposes.

3.9.1.2 Detail Z Version for DN 80 thru DN 150

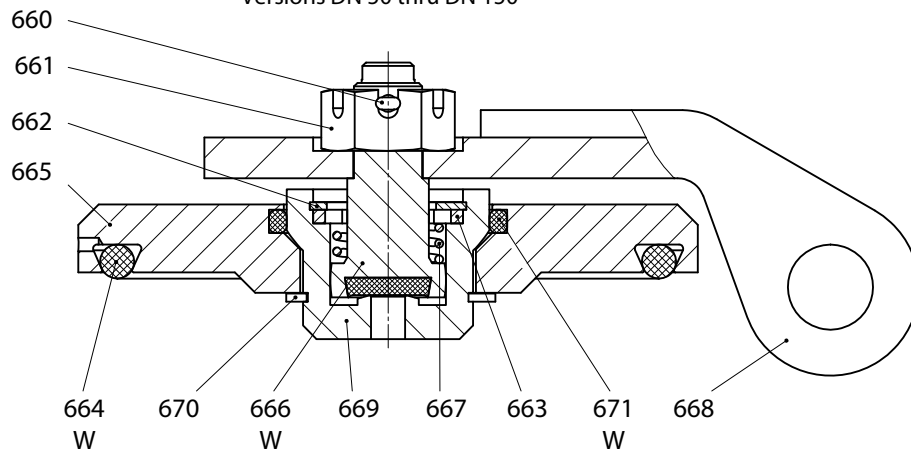


3.9.1.3 View Y SSV flap

Version DN 25

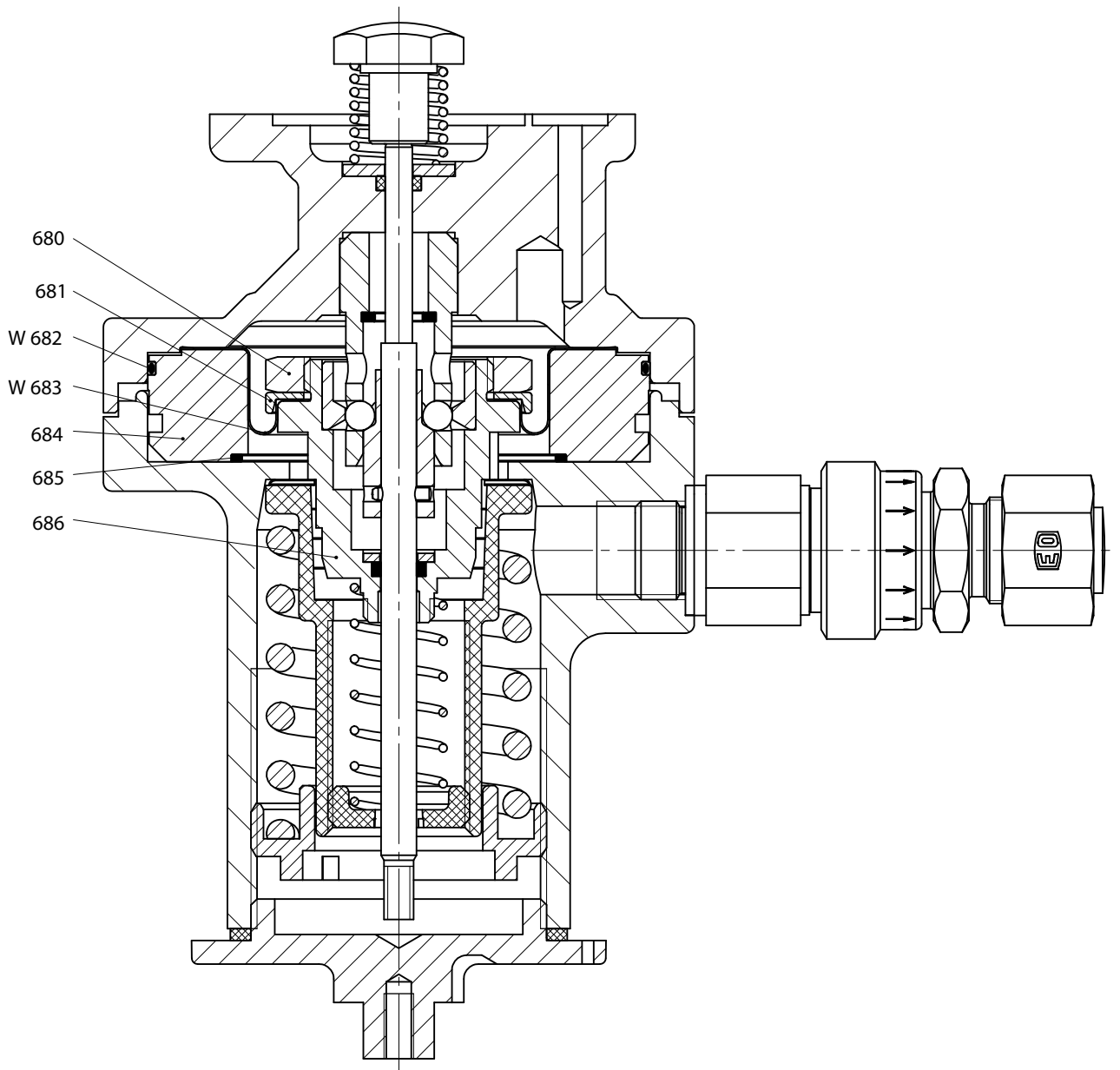


Versions DN 50 thru DN 150



W Parts should be held in stock for maintenance purposes.

3.9.1.4 Spare parts drawing actuator K2a



W Parts should be held in stock for maintenance purposes.

For items missing, see K1a.

3.9.2 Spare parts list actuators K1a and K2a

Item no.	Denomination	Number	W	Material	Part no.				
					DN 25	DN 50	DN 80	DN 100	DN 150
600	Sealing ring	1		NFSt	19199	19199	19199	19199	519024
601	Retaining bolt	1		NSt	15026019	15026019	15026019	15026019	15059043
602	O ring	1	W	KG	21253	21253	21253	21253	20323
603	O ring	1	W	KG	21250	21250	21250	21250	20914
604	Bushing	1		Ms	15025016	15027016	15027016	15027016	15059028
605	Torsion spring	1		NSt	15026022	15026022	15027022	15027022	15059032
606	Sleeve	1		NSt	15026023	15026023	15027014	15027014	15059031
607	Axial bearing	1		K	15026024	15026024	15027021	15027021	15059045
608	O ring	1	W	KG	21254	21254	520041	520041	20448
609	O ring	1	W	KG	21250	21250	21250	21250	20914
610	Spindle bush	1		Ms	15026018	15026018	15027017	15027017	15027017
611	Screwed plug, optional:								
611	For version without approach switch	2		KG	26550	26550	26550	26550	26550
611	For version with 1 approach switch	1		KG	26550	26550	26550	26550	26550
612	Sphere	2		NSt	5184	5184	5184	5184	5184
613	Pressurized section	1		LM	15026511	15026511	15026511	15026511	15026511
614	Thread insert	4		St	27132	27132	27132	27132	27132
615	Lock washer	4		St	14123	14123	14123	14123	14123
616	Hex screw	4		St	8172	8172	8172	8172	8172
617	O ring	1	W	KG	20371	20371	20371	20371	20371
618	Hex nut	4		St	3399	3399	3399	3399	3399
619	Sealing ring	1		FSt	19131	19131	19131	19131	19131
620	Cheese head screw	4		St	10150	10150	10150	10150	10150
621	Sphere	6		NSt	5108	5108	5108	5108	5108
622	Spring retainer	1		K	10008563	10008563	10008563	10008563	10008563
623	Lock bushing, complete	1		LM/St...	10010619	10010619	10010619	10010619	10010619
624	Spring housing	1		GLM	15055020	15055020	15055020	15055020	15055020
625	Valve stem, complete	1		NSt/St	10010614	10010614	10010614	10010614	10010614
626	Spring plate	1		K	10000856	10000856	10000856	10000856	10000856
627	Spring plate	1		Ms	10001844	10001844	10001844	10001844	10001844
628	Pipe	1		LM	10024060	10024060	10024060	10024060	10024060
629	SSV axle	1		NSt/St	15026400	15026400	15027008	15027008	15059029
630	Bushing	1		Ms	15026017	15026017	15027013	15027013	15059027
631	Pressure spring	1		NFSt	15026005	15026005	15027015	15027015	15027015
632	Switch housing, optional:								
632	Switch housing for 1 approach switch	1		GLM	15055039	15055039	15057039	15057039	15057039
632	Switch housing for 2 approach switches	1		GLM	15055040	15055040	15057040	15057040	15057040
633	Sealing ring	1		NFSt	19195	19195	19196	19196	19196
634	Lock bushing	1		NSt	15026020	15026020	15027018	15027018	15027018
635	Sealing ring	1	W	LM	518017	518017	518017	518017	518017
636	Screwed connection	1		St	530043	530043	530043	530043	530043
637	O ring	1	W	KG	21251	21251	21251	21251	21251
638	SSV bottom, complete	1		GLM...	10010605	10010605	10010605	10010605	10010605
639	Pressure spring	1		FSt	10011077	10011077	10011077	10011077	10011077
640	Pressure disc	1		LM	10004882	10004882	10004882	10004882	10004882

Item no.	Denomination	Number	W	Material	Part no.				
					DN 25	DN 50	DN 80	DN 100	DN 150
641	Diaphragm disc	1		St	10010611	10010611	10010611	10010611	10010611
642	Diaphragm	1		KG	10010610	10010610	10010610	10010610	10010610
643	On / off valve RMG 919-1	1		NSt/St	15801366	15801366	15801366	15801366	15801366
644	Control spring, optional:								
644	W _{dso} 25 - 50 mbar	1		FSt	10001829	10001829	10001829	10001829	10001829
644	W _{dso} 50 - 100 mbar	1		FSt	10001838	10001838	10001838	10001838	10001838
644	W _{dso} 80 - 250 mbar	1		FSt	10000866	10000866	10000866	10000866	10000866
644	W _{dso} 200 - 500 mbar	1		FSt	10000867	10000867	10000867	10000867	10000867
644	W _{dso} 500 - 1 ,500 mbar	1		FSt	10001839	10001839	10001839	10001839	10001839
644	W _{dso} 1,300 - 1,700 mbar	1		FSt	18358382	18358382	18358382	18358382	18358382
644	W _{dso} 1600 - 2300 mbar	1		FSt	15056094	15056094	15056094	15056094	15056094
645	W _{dsu} 5 - 15 mbar	1		FSt	10001828	10001828	10001828	10001828	10001828
645	W _{dsu} 14 - 40 mbar	1		FSt	10001837	10001837	10001837	10001837	10001837
645	W _{dsu} 35 - 120 mbar	1		FSt	10001760	10001760	10001760	10001760	10001760
645	W _{dsu} 100 - 300 mbar	1		FSt	10001830	10001830	10001830	10001830	10001830
646	Sealing ring	1		KG	20343	20343	20343	20343	20343
647	SSV sealing cap	1		GLM	10000854	10000854	10000854	10000854	10000854
648	Adapter	1		St	10030858	10030858	10030858	10030858	10030858
649	Vent valve	1		St	10010570	10010570	10010570	10010570	10010570
650	Sealing ring	1	W	LM	518017	518017	518017	518017	518017
651	Screwed connection	1		St	530043	530043	530043	530043	530043
652	Sealing ring	1	W	LM	518017	518017	518017	518017	518017
653	Retention tube	1		LM	10001784	10001784	10001784	10001784	10001784
654	Sealing ring	2	W	NFSt			19199	19199	19199
655	Feather key	1		NSt			27998	27998	27998
656	Hub, complete	1		Ms			15027300	15027300	15027300
660	Splint	1		NSt	15043	15043	15043	15043	15043
661	Castle nut	1		NSt	13204	13204	13204	13204	13204
662	Sealing ring	1		NFSt	19197	19197	19197	19197	19197
663	Washer	1		Ms	15026104	15026104	15026104	15026104	15026104
664	O ring	1	W	KG	21255	21259	21262	21264	520103
665	Plate	1		Ms	15025102	15026102	15027102	15028102	15059022
666	Piston, vulcanised	1	W	NSt/KG	15026110	15026110	15026110	15026110	15059033
667	Pressure spring	1		NFSt	15026105	15026105	15026105	15026105	15026105
668	Lever	1		NSt	15025101	15026101	15027101	15028101	15059030
669	Valve insert	1		Ms		15026103	15026103	15026103	15059025
670	Sealing ring	1		NFSt		19198	19198	19198	19198
671	O ring	1	W	KG		21260	21260	21260	21260
680	Hex nut	1		St	10004924	10004924	10004924	10004924	10004924
681	Support ring	1		LM	10004938	10004938	10004938	10004938	10004938
682	O ring	1	W	KG	21005	21005	21005	21005	21005
683	SSV diaphragm	1		KG	18354902	18354902	18354902	18354902	18354902
684	Intermediate ring	1		LM	10010598	10010598	10010598	10010598	10010598
685	O ring	1	W	KG	20361	20361	20361	20361	20361
686	Diaphragm disc, complete	1		LM/St/..	10004929	10004929	10004929	10004929	10004929

4. Parts for maintenance purposes

Item no.	Denomination	Number	Part no.				
			DN 25	DN 50	DN 80	DN 100	DN 150
2	Sealing ring	4	18710	18710			
7	O ring	1	20832	20832			
15	O ring	1	21261	21261			
16	O ring	1		20513			
17	O ring	1	520110	21258			
21	O ring	1	21271	520001			
28	Sealing ring	1	518017	518017			
29	Sealing ring	1	518017	518017			
36	Round ring RE1,2,3	1	21250	21250			
36	Round ring RE0		21250	21250			
39	Sealing ring	2	518017	518017			
62	O ring	1			20428	20428	
72	O ring	1			20428	20428	520106
74	O ring	1			21263	21266	520082
78	O ring	1			21272	21267	520107
Regulating assembly 1							
100	O ring	1	20588	20588			
110	Roll diaphragm	1	15056001	15056001			
115	Sealing ring	1	18710	18710			
116	O ring	1	21252	21252			
117	Guide belt	1	15056251	15056251			
120	Diaphragm, optional:						
120	Diaphragm Ø25	1	15025011				
120	Diaphragm Ø31	1	15026801	15026801			
120	Diaphragm Ø50	1		15026002			
123	Valve seat Ø25	1	15025012				
123	Valve seat Ø31	1	15025003	15056802			
123	Valve seat Ø50	1		15056009			
124	Pressurized section, optional:						
124	Pressurized section Ø25	1	10006184				
124	Pressurized section Ø31	1	10009199	10009199			
124	Valve cone ø50	1		15056035			
125	Sealing ring, optional:						
125	Sealing ring ø25	1	10006183				
125	Sealing ring ø31	1	10009215	10009215			
125	Sealing ring ø50	1		10009217			
126	O ring	1	20451	20451			
129	Sealing ring	1	18694	18694			
130	O ring	1	520102	520102			
134	Sealing ring	1	518017	518017			
137	Sealing ring	1	518017	518017			
141	Valve stem, complete	1	15055300	15056300			
142	Valve plate, at option:						
142	Valve plate Ø25	1	10023463				
142	Valve plate Ø31	1	10023464	10023464			
142	Valve plate Ø50	1		15026028			

Regulating assembly 2

Item no.	Denomination	Number	Part no.				
			DN 25	DN 50	DN 80	DN 100	DN 150
202	O ring	1		20588	20588	20588	
207	O ring	1		20428	20428	20428	
214	Roll diaphragm	1		15056039	15056039	15056039	
220	Sealing ring	1		18710			
221	O ring	1		21252	20607	20607	
222	Guide belt	1		15056251	15057251	15057251	
225	Diaphragm Ø31	1		15026801			
225	Diaphragm Ø50	1		15026002			
225	Pressure-compensating diaphragm ø 60	1			10009120	10009120	
225	Pressure-compensating diaphragm ø 80	1			10009134	10009134	
225	Pressure-compensating diaphragm ø100	1				10009137	
228	Valve seat ø 31	1		15056802			
228	Valve seat ø 50	1		15056009			
228	Valve seat ø 60	1			15027003	15028004	
228	Valve seat ø 80	1			15027002	15028005	
228	Valve seat Ø100	1				15058026	
229	Pressurized section (valve cone), optional:						
229	Pressurized section ø 31	1		10009199			
229	Valve cone ø 50	1		15056035			
229	Pressurized section ø 60	1			10009208	10009208	
229	Pressurized section ø 80	1			10009207	10009207	
229	Pressurized section Ø100	1				10009206	
230	Sealing ring ø 31	1		10009215			
230	Sealing ring ø 50	1		10009217			
230	Sealing ring ø 60	1			10009218	10009218	
230	Sealing ring ø 80	1			10009219	10009219	
230	Sealing ring ø100	1			10009220		
231	O ring	1		20451	20442	20442	
235	O ring	1		20248	20248	20248	
241	Sealing ring	1		518017	518017	518017	
244	Valve rod	1		15056300	15057200	15057200	
245	Valve disc ø 31	1		10023464			
245	Valve disc ø 50	1		15026028			
245	Valve disc ø 60	1			15027020	15027020	
245	Valve disc ø 80	1			15027009	15027009	
245	Valve plate Ø100	1				15028009	
248	O ring	1			20442	20442	
251	Sealing ring	1		518017	518017	518017	

Regulating assemblies 1 and 2 with safety diaphragms

Item no.	Denomination	Number	DN 25	DN 50	DN 80	DN 100	Part no. DN 150
Regulating assemblies 1 and 2 with safety diaphragms							
306	Safety diaphragm	1	15056603	15056603			
314	Valve stem, complete	1	15055620	15056620			
326	Safety diaphragm	1		15056913	15056913	150569131	
334	Valve stem, complete	1		15056620	15057620	150586208	
Regulating assembly 3							
359	Roll diaphragm	1			15058021	15058021	15058021
364	O ring	1			20607	20607	20619
365	Guide belt	1			15057251	15057251	
365	Guide belt	2			15059251		
368	O ring	1			20442	20442	20327
369	O ring	1			20442	20442	20323
370	Sealing ring ø60	1			10009218	10009218	
370	Sealing ring ø80	1			10009219	10009219	
370	Sealing ring ø100	1				10009220	15059054
370	Sealing ring ø140	1					15801762
374	O ring	1			20248	20248	20248
376	O ring	1			20588	20588	20588
379	O ring				20428	20428	20428
382	Sealing ring	1			518017	518017	518017
385	Sealing ring	1			18684	18684	18684
388	Pressure-compensating diaphragm ø 60	1			10009120	10009120	
388	Pressure-compensating diaphragm ø 80	1			10009134	10009134	
388	Pressure-compensating diaphragm ø100	1				10009137	15059057
388	Pressure-compensating diaphragm ø140	1					15059024
391	Valve stem, complete	1			15057200	15057200	15801756
392	Valve seat ø 60	1			15027003	15028004	
392	Valve seat ø 80	1			15027002	15028005	
392	Valve seat Ø100	1				15058026	15059048
392	Valve seat Ø140	1					15801759
393	Pressurized section ø 60	1			10009208	10009208	
393	Pressurized section ø 80	1			10009207	10009207	
393	Pressurized section Ø100	1				10009206	15059050
393	Valve cone ø140						15801757
394	Valve disc ø 60	1			15027020	15027020	
394	Valve disc ø 80	1			15027009	15027009	
394	Valve plate Ø100	1				15028009	15059049
394	Valve plate ø140	1					15059041
400	O ring	1					21267

Regulating assembly 0

Item no.	Denomination	Number	Part no.				
			DN 25	DN 50	DN 80	DN 100	DN 150
430	O ring	1	20588	20588			
436	Sealing ring	1	18710	18710			
439	Roll diaphragm	1	15026705	15026705			
440	O ring	1	520082	520082			
442	O ring	1	20325	20325			
443	O ring	1	21252	21252			
447	Pressurized section for valve seat ø25	1	10006184				
447	Pressurized section for valve seat ø31	1	10009199	10009199			
447	Valve cone for valve seat ø50	1		15056035			
448	O ring	1	20451	20451			
452	Sealing ring	1	18694	18694			
453	O ring	1	520102	520102			
458	Sealing ring	4	18710	18710			
462	Diaphragm for valve seat ø25	1	15025011				
462	Diaphragm for valve seat ø31	1	15026801	15026801			
462	Diaphragm for valve seat ø50	1		15026002			
464	Valve stem, complete	1	15055300	15056300			
465	Valve seat, optional:						
465	Valve seat Ø25	1	15025012				
465	Valve seat Ø31	1	15025003	15056802			
465	Valve seat Ø50	1		15056009			
466	Sealing ring for valve seat ø25	1	10006183				
466	Sealing ring for valve seat ø31	1	10009215	10009215			
466	Sealing ring for valve seat ø50	1		10009217			
467	Valve plate, at option:						
467	Valve plate for valve seat ø25	1	10023463				
467	Valve plate for valve seat ø31	1	10023464	10023464			
467	Valve plate for valve seat ø50	1	15026028				
469	Sealing ring	1	518017	518017			
478	Sealing ring	1	518017	518017			
480	Sealing ring	1	518017	518017			

Item no.	Denomination	Number	Part no.				
			DN 25	DN 50	DN 80	DN 100	DN 150
Regulating assembly 0							
502	O ring	1			20588		
508	Roll diaphragm	1			15039104		
510	O ring	1			520081		
519	Pressurized section for valve seat ø60	1			10009208		
519	Pressurized section for valve seat ø80	1			10009207		
520	Sealing ring for valve seat ø60	1			10009218		
520	Sealing ring for valve seat ø80	1			10009219		
521	Valve plate for valve seat ø60	1			15027020		
521	Valve plate for valve seat ø80	1			15027009		
525	O ring	1			20248		
529	Sealing ring	1			518017		
532	Sealing ring	1			18684		
535	O ring	1			20335		
536	O ring	1			20607		
539	Pressure-compensating diaphragm for valve seat ø60	1			10009120		
539	Pressure-compensating diaphragm for valve seat ø80	1			10009134		
542	Valve stem, complete	1			15027704		
543	Valve seat Ø60	1			15027003		
543	Valve seat Ø80	1			15027002		
44	O ring	1			20442		
545	Hex nut	1			13203		
546	Sealing ring	1			518017		
Actuators K1a and K2a							
602	O ring	1	21253	21253	21253	21253	20323
603	O ring	1	21250	21250	21250	21250	20914
608	O ring	1	21254	21254	520041	520041	20448
609	O ring	1	21250	21250	21250	21250	20914
617	O ring	1	20371	20371	20371	20371	20371
635	Sealing ring	1	518017	518017	518017	518017	518017
637	O ring	1	21251	21251	21251	21251	21251
650	Sealing ring	1	518017	518017	518017	518017	518017
652	Sealing ring	1	518017	518017	518017	518017	518017
654	Sealing ring	2			19199	19199	19199
664	O ring	1	21255	21259	21262	21264	520103
666	Piston, vulcanised	1	15026110	15026110	15026110	15026110	15059033
671	O ring	1		21260	21260	21260	21260
682	O ring	1	21005	21005	21005	21005	
685	O ring	1	20361	20361	20361	20361	

Regulating assembly 0

Item no.	Denomination	Number	Part no.				
			DN 25	DN 50	DN 80	DN 100	DN 150
502	O ring	1			20588		
508	Roll diaphragm	1			15039104		
510	O ring	1			520081		
519	Pressurized section for valve seat ø60	1			10009208		
519	Pressurized section for valve seat ø80	1			10009207		
520	Sealing ring for valve seat ø60	1			10009218		
520	Sealing ring for valve seat ø80	1			10009219		
521	Valve plate for valve seat ø60	1			15027020		
521	Valve plate for valve seat ø80	1			15027009		
525	O ring	1			20248		
529	Sealing ring	1			518017		
532	Sealing ring	1			18684		
535	O ring	1			20335		
536	O ring	1			20607		
539	Pressure-compensating diaphragm for valve seat ø60	1			10009120		
539	Pressure-compensating diaphragm for valve seat ø80	1			10009134		
542	Valve stem, complete	1			15027704		
543	Valve seat Ø60	1			15027003		
43	Valve seat Ø80	1			15027002		
544	O ring	1			20442		
545	Hex nut	1			13203		
546	Sealing ring	1			518017		
Actuators K1a and K2a							
602	O ring	1	21253	21253	21253	21253	20323
603	O ring	1	21250	21250	21250	21250	20914
608	O ring	1	21254	21254	520041	520041	20448
609	O ring	1	21250	21250	21250	21250	20914
617	O ring	1	20371	20371	20371	20371	20371
635	Sealing ring	1	518017	518017	518017	518017	518017
637	O ring	1	21251	21251	21251	21251	21251
650	Sealing ring	1	518017	518017	518017	518017	518017
652	Sealing ring	1	518017	518017	518017	518017	518017
654	Sealing ring	2			19199	19199	19199
664	O ring	1	21255	21259	21262	21264	520103
666	Piston, vulcanised	1	15026110	15026110	15026110	15026110	15059033
671	O ring	1		21260	21260	21260	21260
682	O ring	1	21005	21005	21005	21005	
685	O ring	1	20361	20361	20361	20361	

For More Information

To learn more about RMG's advanced gas solutions, contact your RMG account manager or visit www.rmg.com

GERMANY

Honeywell Process Solutions

RMG Regel + Messtechnik GmbH
Osterholzstrasse 45
34123 Kassel, Germany
Tel: +49 (0)561 5007-0
Fax: +49 (0)561 5007-107

Honeywell Process Solutions

RMG Messtechnik GmbH
Otto-Hahn-Strasse 5
35510 Butzbach, Germany
Tel: +49 (0)6033 897-0
Fax: +49 (0)6033 897-130

Honeywell Process Solutions

RMG Gaselan Regel + Messtechnik GmbH
Julius-Pintsch-Ring 3
15517 Fürstenwalde, Germany
Tel: +49 (0)3361 356-60
Fax: +49 (0)3361 356-836

Honeywell Process Solutions

WÄGA Wärme-Gastechnik GmbH
Osterholzstrasse 45
34123 Kassel, Germany
Tel: +49 (0)561 5007-0
Fax: +49 (0)561 5007-207

POLAND

Honeywell Process Solutions

Gazomet Sp. z o.o.
ul. Sarnowska 2
63-900 Rawicz, Poland
Tel: +48 (0)65 5462401
Fax: +48 (0)65 5462408

ENGLAND

Honeywell Process Solutions

Bryan Donkin RMG Gas Controls Ltd.
Enterprise Drive, Holmewood
Chesterfield S42 5UZ, England
Tel: +44 (0)1246 501-501
Fax: +44 (0)1246 501-500

CANADA

Honeywell Process Solutions

Bryan Donkin RMG Canada Ltd.
50 Clarke Street South, Woodstock
Ontario N4S 0A8, Canada
Tel: +1 (0)519 5398531
Fax: +1 (0)519 5373339

USA

Honeywell Process Solutions

Mercury Instruments LLC
3940 Virginia Avenue
Cincinnati, Ohio 45227, USA
Tel: +1 (0)513 272-1111
Fax: +1 (0)513 272-0211

TURKEY

Honeywell Process Solutions

RMG GAZ KONT. SIS. ITH. IHR. LTD. STI.
Birlik Sanayi Sitesi, 6.
Cd. 62. Sokak No: 7-8-9-10
TR - Sasmaz / Ankara, Turkey
Tel: +90 (0)312 27810-80
Fax: +90 (0)312 27828-23

